

**R**

**Investors' Report**  
2017-2018

---

# Transforming Impact

**Rotman**  
Here's where it changes.



# Thank you for helping us create lasting impact.

---

Rotman is increasingly recognized as a catalyst for positive change. Our School is a hub for learning and research where remarkably diverse initiatives share a common purpose: to create value for business and society. Thank you for helping us make change happen.

---

## **A shared commitment**

The business and societal challenges that define our time are complex, interconnected and urgent. Every day I'm inspired by a community of students, faculty and partners who are tackling those challenges with boldness and ingenuity.

When alumni and friends visit our campus, they're inevitably struck by its invigorating energy – which is only magnified by our location, at the heart of a great university in one of the most diverse cities on earth. From our newest students to our most long-standing supporters, Rotman attracts people who want to make a difference. They share a conviction that by combining business insights with dynamic leadership, we can create positive change – in companies and industries, as well as in communities and individual lives.

## **Proof that it's working**

The vital mix of rigour and creativity that animates our programs attracts growing numbers of extraordinary students. We've seen full-time MBA applications, for example, increase by 90% since 2013. In addition to building core skills through demanding programs, our students gain access to a remarkable network of scholars, entrepreneurs and business leaders. They study with faculty members whose work has placed Rotman among the world's top research institutions for five years running. And in our renowned centres, institutes and labs, they interact with researchers and partners who are tackling real-world business problems from fresh new angles.

All of these valuable experiences open doors to opportunity – with tangible outcomes. In our MBA program, for instance, 85% of students leveraged their degrees to secure relevant employment within three months of graduation.

## **Your support makes it possible**

Rotman couldn't achieve such impact without the steadfast support of our generous donors. This report highlights the depth of engagement among our donors and provides a window on some of the many success stories their investments have made possible. From our network of active alumni supporters, to innovative corporate partnerships, to a landmark new gift from the Rotman family, these pages tell a story of rewarding investments and meaningful results that we can all take pride in.

I want to express my heartfelt gratitude to our growing community of generous investors. We're energized by your commitment to creating value together, and we're inspired by your vision.

Our thanks,



**Tiff Macklem**

Dean, Rotman School of Management

# Learning that ignites potential.

Global diversity

**52%**

of incoming full-time MBA students in 2017 were born outside Canada. They come from 51 countries and collectively speak 28 languages

**90%**

increase in full-time MBA applications over the last five years

**85%**

of our MBA graduates in 2017-2018 were employed within three months of completing the program





# Insights that reshape the future.

Top 10 in research

# 10

Rotman faculty have placed our School among the top 10 research institutions in the world for five years running, according to the *Financial Times* rankings

# 2

faculty received coveted Canada Research Chairs, which recognize some of the world's most accomplished and promising minds

# \$25M

investment in the Creative Destruction Lab from the Federal Government



Heather Reisman, founder, Chair and CEO of Indigo and co-founder of Kobo, in conversation with Linda Hasenfratz, CEO of Linamar Corporation.

# Dialogue that sparks bold action.

## Thought leadership

**574**

leaders, entrepreneurs, developers and investors from four continents attended our 2018 Machine Learning and the Market for Intelligence Conference

**95**

public talks hosted annually by Rotman cover a diverse range of topics shaping society and the business environment

**4,500**

alumni attended lectures, networking events and professional development opportunities held throughout the year





# This is what we mean by transforming impact.

Faculty contributing  
to the global conversation

**209**

journal articles

**4**

published books

**51**

book chapters

# 3,681

business leaders participated in Executive Programs in 2017-2018 and the *Financial Times* rated Rotman #1 among open enrolment executive programs in Canada

# 41%

of full-time MBA students are women, as are 59% of students in specialized programs. These figures have climbed steadily since we made improved gender balance a priority in 2015

# 3,500

health sector leaders have built their business and leadership capabilities through the Sandra Rotman Centre for Health Sector Strategy since the original program launched in 2004

# 24

schools in 17 countries partnered with Rotman on international student exchange programs in 2017

# 1,500

people attended discussions facilitated by the Institute for Gender and the Economy (GATE), and GATE researchers shared their insights in 67 media stories and interviews

# 650

alumni volunteered their time on advisory boards, as mentors and as speakers

# 182

editorial appointments

# 296

invited lectures and presentations

# 523

media interviews and mentions

**How do we  
ensure our efforts  
will have impact?  
We apply  
a simple test.**

---

**The challenges we tackle must be relevant.**

---

**The work we do must be transformative.**

---

**The results we achieve must have lasting value.**

---





# The challenges we tackle must be relevant.

---

Helping tech startups scale up in the Creative Destruction Lab. Illuminating equity issues at the Institute for Gender and the Economy. Analyzing how people make choices at BEAR: Behavioural Economics in Action at Rotman. Leveraging the power of design thinking at Rotman DesignWorks. Exploring applications of everything from machine learning to blockchain at Rotman FinHub: the Financial Innovation Hub in Advanced Analytics. These are just some of the initiatives spearheaded by faculty and students in response to a fast-changing business environment and its broader social context.

## Healthy outlook

The Rotman family has extended its legacy of generous support, committing \$6 million to create The Sandra Rotman Centre for Health Sector Strategy. The gift will allow the Centre to expand its work, advancing research and leadership development to benefit health systems, institutions – and ultimately patients.

Healthcare is the world's largest industry, driving \$7 trillion in economic activity annually. Its leaders make critical judgments about everything from the creation and management of advanced facilities to the optimal allocation of resources – all with the goal of saving and enhancing human lives.

Despite these high stakes, both human and economic, leaders in business education have devoted relatively little attention to management and operational capacity in the health sector, especially outside the United States. Since 2004, when it was launched with a foundational gift from The Rotman Family Foundation, the Rotman School of Management's program in health sector strategy has been changing that.

### A powerful vision

"My husband believed excellent business education could benefit leaders in every field – and he was passionate about applying this principle to healthcare," says Sandra Rotman. "In my own work, I've seen that when health leaders build management capabilities,

they're more effective in running their organizations, in engaging with governments and in developing strategy. The difference is striking."

Through a series of generous gifts, the Rotman family has played a vital role in the School's emergence as a centre of learning and research focused on the unique challenges and imperatives of the health sector. Fuelled by this support, the School has made major scholarly and policy contributions, and worked with more than 3,500 healthcare leaders from Canada and around the world.

In the past year, the Rotman family extended its commitment with a \$6 million investment to create The Sandra Rotman Centre for Health Sector Strategy. "This gift more than doubles our research and teaching capacity and therefore our opportunity for impact," says Brian Golden, Vice-Dean, MBA Programs and the inaugural holder of the Sandra Rotman Chair in Health Sector Strategy.

Visionary support from the Rotman family has also been essential to the development of a new Global Executive

MBA in Health and Life Sciences, a program that attracted Dr. Kathryn Tinckam to Rotman in 2018. An associate professor at the University of Toronto, the Director of Quality Improvement and Innovation in the University Health Network's Transplant Program, and the Director of the HLA Laboratory, Dr. Tinckam reflects that strong health sector management requires a unique mix of capabilities – and that physicians in leadership roles benefit from cultivating management skills to complement their clinical insights: "I think healthcare administration is a discipline that requires training as much as any discipline in surgery or medicine."

For Janis Rotman, President of the Rotman Family Foundation, stories like Dr. Tinckam's perfectly capture the Foundation's philanthropic mission: "Health and education have always been at the heart of our work. Through the Centre, we are able to support an innovative program that's working at the intersection of those two priorities to transform the delivery of care."

Brian Golden (left), Sandra Rotman Chair in Health Sector Strategy at The University of Toronto and The University Health Network; and Co-Academic Director, Global Executive MBA for Healthcare and the Life Sciences Program

A presentation for the Global Executive MBA for Healthcare and the Life Sciences Program (right).



# The work we do must be transformative.

---

Expanding knowledge and fuelling innovation.  
Rethinking old models and inventing new ones.  
Accelerating personal and career growth. Advancing business practices to promote diversity and inclusion.  
The common theme that unites all dimensions of Rotman is a drive to create change for the better. We bring together the right minds, resources and support systems to discover unexpected connections and ignite breakthrough solutions. By encouraging the interplay of ideas and points of view, we inspire gifted people to identify – and create – those critical inflection points where meaningful change begins.

Rotman engages a vibrant network of thousands of alumni around the world, including hundreds of volunteers who return to the School to share timely insights from their fields.

## Strong returns

The Dean's Society is a community of donors who make leadership contributions to the Rotman Annual Fund – supporting student success, driving timely research and fuelling the innovative centres and labs that set our School apart. While each Dean's Society member has unique reasons for giving, all are united by a desire to make a difference.

Every year, more than 300 alumni and friends make a gift of \$1,000 or more to the Rotman Annual Fund. Their generosity places them among an exclusive group of donors: the Dean's Society.

Dean Tiff Macklem draws a direct line between this group of committed donors and the scale of Rotman's impact, noting that the Annual Fund provides resources that the School can deploy quickly to seize opportunities and test promising ideas. "The initiatives that set us apart today – like the Creative Destruction Lab and Rotman DesignWorks – exist because we've had the resources to be creative and nimble," Dean Macklem explains. "Tuition funds the high-quality degree programs we deliver, but the Dean's Society empowers us to go further. Support for the Rotman Annual Fund has enabled us to develop the unique projects that have put us on the map globally as a centre for research, entrepreneurship and leadership development."

### Shaping the future

Fariba Anderson, (MBA '04), Executive Partner at the research and advisory firm Gartner, has supported Rotman at the Dean's Society level for nearly a decade.

She's excited to see Rotman constantly pursuing new forms of impact. "I really believe that Rotman is shaping the future of Canada," Anderson says. "I'm proud to support that, and have been doing so every year since I graduated in 2004. Plus, Rotman is on my resume for life. Why wouldn't I want to see its impact and reputation grow?"

In addition to the satisfaction of helping the School create positive change, Dean's Society members have unique opportunities to engage with the Rotman community – exploring leading-edge research and connecting with dynamic networks of students, scholars and business leaders. Hondy Hung (MBA '11), Director of Partnership and Strategy Development at CIBC, joined the Dean's Society both to thank Rotman for its impact on his career trajectory as an alumnus – and to connect with future opportunities. "This network leads in so many directions: lifelong learning, partnerships, sponsorships," he explains. "It has a lot of value for me, both personally and professionally. And as I give back I help to advance the Rotman brand."

Catherine Graham (MBA '01), President of RightSleeve, a promotional products agency, also sees shared value in the

relationship she sustains with Rotman through the Dean's Society: "As an entrepreneur, I'm interested in the conversations Rotman is convening in the business community – and I'm glad to support that kind of thought leadership. Rotman's investment in providing ongoing education has meant that my learning has continued well beyond graduation; the range of speakers and conferences continues to impress."

### Engagement breeds engagement

For several years after he graduated, David Crawford (MBA '91), a Partner at Hugessen Consulting, wasn't closely connected to the School. Then he began teaching at Rotman in the Institute of Corporate Directors program. Looking back on what inspired him to join the Dean's Society, Crawford recalls: "It was as simple as being in the building – seeing the students, the quality of the faculty, the events. There was so much good work happening; I wanted to help maintain that momentum." Today, Crawford sometimes invites fellow alumni to events at Rotman. "If they come once, I don't have to persuade them to come back. They're impressed, and they start paying attention on their own. Engagement breeds engagement."



# The results we achieve must have lasting value.

---

In addition to equipping tomorrow's leaders with fundamental knowledge and skills, we encourage our students to explore alternatives, test conventions – even shake things up a little as they search for smarter solutions. In the same spirit, we challenge our faculty and research partners to set aside assumptions, rethink models and redefine expectations. At Rotman, current and future leaders change their ways of thinking and their ability to make a difference – whether working to reshape a company, a profession, an industry or an entire economy.

Panel at the Machine Learning Conference (left).

Professor Dilip Soman (centre) Director, Behavioural Economics In Action at Rotman (BEAR).

Brian Porter (right) President and CEO, Scotiabank, announces the Scotiabank Disruptive Technologies Venture



## Banking on partnership

From innovative collaborations with students to major financial support for our centres, institutes and labs, Scotiabank is strategically investing its philanthropic dollars in the next generation of young leaders. Our multi-faceted relationship fuels innovation and learning while connecting the bank with emerging talent.

An industry partner of long standing, Scotiabank has generously donated \$3,625,000 in support of Rotman students and initiatives. These contributions have helped to fuel Rotman DesignWorks, the Creative Destruction Lab and the Institute for Gender and the Economy, as well as numerous research funds and scholarships.

The bank consciously spreads its support across many different dimensions of our school. “For us academic partnerships are about more than money – they’re about learning and exchange,” explains Michael Zerbs (MBA, ’89), Group Head and Chief Technology Officer at Scotiabank. “Being connected with Rotman in different ways gives our teams opportunities to engage with top thinkers in specialized areas. It also gives Rotman students with diverse interests access to our leaders and insight into real-world business challenges.”

### Growing presence

During the past year, the bank established the Scotiabank Latin American Scholarships, offering a combined \$75,000 in financial support to three outstanding students annually. This investment makes a profound difference for scholarship recipients. It also provides valuable support as the School responds to an upward trend in enrolments from Latin America: the number of students from the region has more than doubled since 2016.

The positive impact of the scholarships should also flow back to Scotiabank over time. The bank already has a substantial presence in Latin America; continuing to build talent and capacity in the region’s banking sector is in line with Scotiabank’s international growth strategy.

### Inspiring exchanges

In addition to offering vital financial support, Scotiabank fuels Rotman’s drive for impact by participating generously in a range of projects, forums and leadership activities. At our annual Machine Learning and the Market for Intelligence conference, which attracts some of the world’s leading technologists, Scotiabank is both a major sponsor and a participant, as its in-house teams bring new ideas and applications to discuss with attendees. The bank plays a similar dual role in funding and contributing to MBA projects at Rotman DesignWorks, a business design studio that takes a human-centred approach to innovation challenges.

Scotiabank’s collaborations across Rotman underline that the relationship is indeed about far more than money. “Partnerships have changed the way we look at the world around us,” Michael Zerbs says. The feeling is mutual.



**Rotman is a hub  
for talent, ideas and  
creative energy.  
We focus on three  
main areas.**

---

**Teaching and learning**

---

**Research insights**

---

**Public engagement**

---



# Teaching and learning

---

Rotman is, first and foremost, a school. We help a diverse array of students gain the knowledge, skills, confidence and intellectual agility they'll need to thrive – and lead – in a world of accelerating change.





## Quest for excellence

The TorQuest Scholars Award was created in 2018 by a group of partners at TorQuest, a leading Canadian private equity firm; most are Rotman alumni who want to give back to the School that helped lay the foundations of their success.

"Because many of us earned degrees from the University of Toronto," says Michael Hollend (JD/MBA '99), "we know first-hand the value that Rotman provides to the community at large, and to individual students." Joining Hollend in initiating the new award are fellow TorQuest partners Daniel Sonshine (JD/MBA '01) and Matt Chapman (MBA '00), as well as Senior Managing Partner Brent Belzberg, an alumnus of U of T's Faculty of Law (LLB '75).

The TorQuest Scholars Award recognizes students who demonstrate academic excellence, strong volunteer commitments, and the intention to pursue a career in private equity.

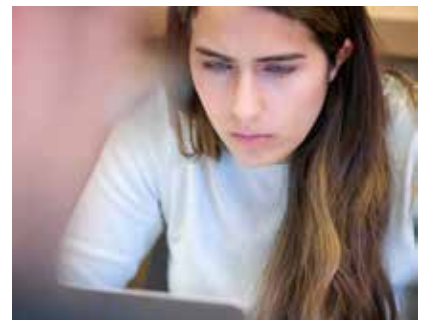
This year's recipients are:

### **Varun Chandak, MBA '18**

In addition to his outstanding academic achievements, Varun Chandak launched the Access to Success Organization, a coalition of graduate business schools focused on access and inclusion for MBA students with disabilities. In its first year, the initiative raised more than \$45,000 and convened a two-day national conference. Born in India, where he completed undergraduate commerce studies and earned his chartered accountant designation, Chandak values both the financial and mentorship aspects of the TorQuest scholarship: "Having alumni who are leaders in their industry take an active interest in my professional development strengthened my sense of belonging at Rotman."

### **Thomas Schneider, JD/MBA '19**

"I hope one day to have the opportunity to pay forward the support that you provided me," Thomas Schneider said in thanking the donors of the TorQuest Scholars Award. The financial component of the scholarship allowed Schneider to focus more intently on his studies – where his efforts earned him first prize in the McKinsey Case Competition, the top individual submission in the Rotman Problem Solving Challenge, and a place on the Dean's List. At the same time, he found the award's mentorship component "invaluable" as he sought summer employment between his years of academic study.





# Research insights

---

Our respected faculty members push the boundaries of inquiry, exploring stubborn challenges and promising opportunities, and grounding cross-disciplinary insights in foundational management expertise.

Left to right:  
Susan Christoffersen,  
William A. Downe  
BMO Chair in Finance

Ajay Agrawal,  
Geoff Taber Chair  
in Entrepreneurship  
and Innovation

Avi Goldfarb,  
Rotman Chair in  
Artificial Intelligence  
and Healthcare

## The edge of our chairs

New research chairs endowed during the past year will fuel scholarship that advances understanding in areas ranging from finance and healthcare delivery to entrepreneurship. The chairs are named for an accomplished financial executive, a respected legal expert and an eminent philanthropic leader – all with long-standing ties to Rotman.

Three outstanding Rotman scholars, each with an extraordinary record of research productivity and collaboration, were honoured in 2017-2018 with appointments to these newly endowed chairs. “The funders of these prestigious chairs are not only supporting exceptional faculty members,” says Ken Corts, Vice-Dean, Faculty & Research. “They’re helping to fuel entire ecosystems that include graduate students, labs, partnerships and public engagement.”

### Ahead of the program

The William A. Downe BMO Chair in Finance was created through a major gift from BMO Financial Group to honour Downe’s 34-year career with the bank, which included a decade as Chief Executive Officer (2007-2017). The Rotman Family generously matched BMO’s gift. The first chairholder, Prof. Susan Christoffersen, has published widely cited research on mutual funds and the role of financial institutions in capital markets. She has also helped to expand Rotman’s program offerings

in several areas of vital interest to the banking sector, notably risk management and data analytics. Dr. Christoffersen has done visionary work to align Rotman’s program offerings with market needs at a time of rapid change in technology and business models.

### Start-up scholar

The Geoff Taber Chair in Entrepreneurship and Innovation was established in remembrance of a founding member of the Creative Destruction Lab (CDL) who died in 2016. Geoff Taber’s friends, family and colleagues contributed generously to the endowment, and their gift was matched by the Rotman family. The first chairholder is Prof. Ajay Agrawal, the founder of the Creative Destruction Lab and a Professor of Strategic Management who has been a key figure in Toronto’s emergence as a hub for the commercialization of AI and quantum computing technologies. The work of Dr. Agrawal, who is known for his scholarly agility, is an appropriate legacy for Geoff Taber – who, according to close

colleague Chad Bayne, was inspired by the potential insights to be uncovered “at the nexus of law, technology and entrepreneurship.”

### Predicting better healthcare

The Rotman Chair in Artificial Intelligence and Healthcare was established in 2018 as part of a transformational \$6 million gift from the Rotman family (see page 13) that provides funding for three new faculty chairs, among many other initiatives. The first scholar to hold the new chair is Prof. Avi Goldfarb, a Professor of Marketing at Rotman and Chief Data Scientist at the Creative Destruction Lab, where he offers expert guidance to students and entrepreneurs alike in harnessing the vast possibilities of AI. A co-author – with Professors Ajay Agrawal and Joshua Gans – of Prediction Machines: The Simple Economics of Artificial Intelligence, Dr. Goldfarb will explore the potential applications of prediction machines for healthcare and the management of health systems.



# Public engagement

---

We share the fruits of our teaching and investigation in conversations with a wider circle of stakeholders, and in fruitful collaborations with business, government and the not-for-profit sector.

## IMPACT IN ACTION

### Intelligent conversation

Through speaker series, conferences and other events, Rotman helps build a larger community of interest around issues that matter.

#### What machines can mean

In October 2018, the School convened the fourth annual conference on Machine Learning and the Market for Intelligence. Hosted by Rotman professor Dr. Ajay Agrawal and his colleague Shivon Zilis, a dynamic thinker on machine intelligence and a fellow with the Creative Destruction Lab, the event has quickly become an essential forum for leading-edge discussions about the social and economic implications of AI. Among the speakers at this year's gathering were Mark Carney, Governor of the Bank of England; Marzyeh Ghasemmi, an academic innovator working at the intersection of computer science and medicine; Michael Evans, President of Alibaba; and Linda Hasenfratz, CEO of Linamar Corporation, a manufacturer of advanced engineering products. This annual event attracts more than 500 of the field's top authors, academics, entrepreneurs and investors.

#### In touch

Each year Rotman hosts a range of events across Canada and around the world. This year we convened in Toronto, Calgary and Vancouver as well as in London, Hong Kong and numerous other centres. Our events are designed to connect, inform and engage the more than 4,500 alumni who attend. Expert talks and panel discussions among authors and entrepreneurs draw graduates into timely, relevant conversations. Professional development workshops offer opportunities to hone specific skills. And Reunite at Rotman, a three-day event convened over homecoming weekend in October, draws more than 1,000 alumni for a program of learning, networking and celebration.

#### Select Rotman Events

May 2017 to Apr 2018

London, UK Alumni & Friends Reception, May 2017

Life Long Learning: Nudging Innovation in Your Organization, June 2018

Tiff at Rotman, Sept. 2017

Being an Ally and Lending Privilege, Sept. 2017

Reunite at Rotman, Oct. 2017

Better Now: Six Big Ideas to Improve Health Care for All Canadians, Oct. 2017

Results at the Top: Using Gender Intelligence to Create Breakthrough Growth, Oct. 2017

Hong Kong & Macao Evening with the Consul General of Canada, Nov. 2017

Collaborating with the Enemy: How to Work with People You Don't Agree with or Like or Trust, Dec. 2017

*Option B: Facing Adversity, Building Resilience, and Finding Joy*, Jan. 2018

São Paulo, Brazil Alumni & Friends Panel, Jan. 2018

Dubai, Global Executive MBA Speaker Series, Feb. 2018

Big Ideas Speaker Series, Feb. 2018

*The Four Tendencies: The Indispensable Personality Profiles That Reveal How to Make Your Life Better*, Feb. 2018

*That's What She Said: What Men Need to Know and Women Need to Tell Them About Working Together*, March 2018

Family Fun Day, April 2018

Finance Forum, April 2018



Mark Carney, Governor of the Bank of England, addressed the fourth annual Machine Learning and the Market for Intelligence conference, focusing on the importance of education as economies adapt to the rise of AI.

# When we make an investment, the numbers add up. **As you'd expect.**

Rotman is committed to transparency, sound governance and prudent risk management – the values we share with our faculty and staff, the University of Toronto, our donor community and all of our stakeholders.





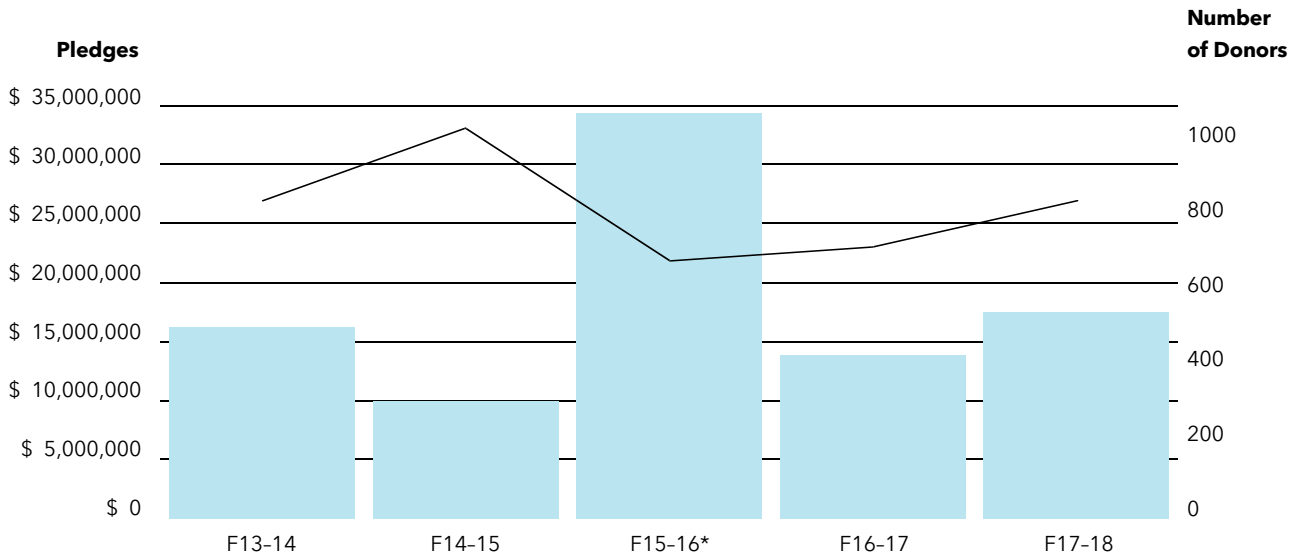
DesignWo

# Rotman Financials

	2016/17	2017/18
<b>Revenue:</b>		
University Fund Allocation	\$ 7,761,810	\$ 7,007,650
Public Programs Tuition & Other Ancillary Fees	85,921,475	89,754,055
Private Programs Tuition & Other Ancillary Fees (1)	10,948,564	12,216,006
Government Funding	13,875,155	13,693,911
Other University Revenue	2,475,768	3,073,201
Executive Development Programs	15,193,046	16,026,966
Rotman Vision Fund	266,707	320,670
Expendable Donations	3,017,543	6,037,704
Endowment Income	3,235,667	3,179,481
External Recoveries	9,859,599	11,465,257
Miscellaneous Income	7,496,357	6,093,772
<b>Total revenues</b>	<b>\$ 160,051,691</b>	<b>\$168,868,673</b>
<b>Expenses:</b>		
Academic Staff Salaries & Benefits	\$ 49,057,831	\$ 51,376,381
Administrative Staff/Librarian /		
Research Associates Salaries & Benefits	29,525,766	31,309,793
Equipment and Furnishings	1,540,824	1,346,335
Supplies & Services	723,111	627,548
Space & Building Services	3,817,984	3,302,081
Program Delivery	11,298,388	13,192,250
Marketing & Communications	4,389,529	4,402,986
Other Research	3,207,491	4,041,042
Student Financial Aid	8,276,780	8,743,203
Other Costs	5,454,936	4,691,291
UT Overhead	21,866,737	23,286,424
University Fund Contribution	10,287,454	10,917,480
Debt Service Charges	1,171,227	1,147,134
<b>Total expenses</b>	<b>\$ 150,618,058</b>	<b>\$158,383,948</b>
<b>Operating surplus</b>	<b>\$ 9,433,633</b>	<b>\$ 10,484,725</b>

Note: (1) EMBA, GEMBA and GEMBA-HLS

# Your vital investment

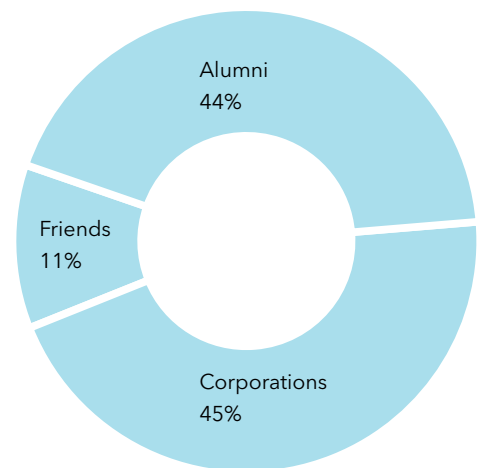


\*includes significant realized planned gift

## Gifts by Designation

Research Centres, Institutes & Labs	\$ 10,996,795
Chairs & Professorships	\$ 4,849,562
Student Support	\$ 1,282,209
Dean's Strategic Fund	\$ 383,629
<b>Total Raised</b>	<b>\$ 17,512,195</b>

## Gifts by Donor Source



**We gratefully  
acknowledge  
our generous  
donors.**

# Lifetime Giving

Recognizing Rotman's most generous donors, who have made cumulative contributions to the School of \$25,000 or more. This list reflects lifetime giving to Rotman as of April 30, 2018.

---

## \$25,000,000+

Marcel Desautels  
Sandra and Joseph Rotman  
(MCOM '60)

---

## \$10,000,000-\$24,999,999

Michael Lee-Chin and Family  
Anonymous (2)

---

## \$1,000,000-\$9,999,999

BMO Financial Group  
Mark S. Bonham (BCOM '82)  
Anson Chan (MBA '92)  
CIBC  
CIT Financial Ltd.  
CN  
Comcast Corporation  
Sydney Cooper and Family  
Corus Entertainment Inc.  
Chartered Professional Accountants  
of Ontario (CPA Ontario)  
Richard J. Currie  
EY  
Margaret and Jim Fleck  
Douglas and Ruth Grant  
Donald A. Guloien (BCOM '80)  
and Irene Boychuk  
Daisy Chiu-Fung Ho (MBA '90)  
The Joe Weider Foundation  
KPMG LLP  
Lee and Margaret Lau  
Manulife  
Maple Financial Group Inc.  
Martin Ossip Family at the Jewish  
Foundation of Greater Toronto  
Peter (BCOM '64) and Judy Mitchelson  
Ontario Ministry of Economic  
Development and Trade  
RBC Foundation  
Scotiabank  
T. David Scrymgeour (BCOM '79)  
Jeffrey S. Skoll  
TD Bank Group  
TMX Group  
John (BCOM '66, MBA '67)  
and Josie Watson  
The Wilson Foundation  
Anonymous (4)

---

## \$500,000-\$999,999

Canadian Pacific  
The Max B. E. Clarkson Family  
Deloitte  
William Downe (MBA '78)  
Anthony and Shari Fell  
John Francis  
Global Risk Institute in Financial  
Services  
Edward J. Kernaghan  
Sonia and Arthur Labatt  
Mastercard Worldwide  
MDS Inc.  
Microsoft Canada  
National Bank of Canada  
National Bank Financial  
Power Corporation of Canada  
Royal Trust Corporation of Canada  
William (MBA '62) and Phyllis Waters  
Anonymous

---

## \$250,000-\$499,999

John E. Abele  
Accenture Inc.  
Aimia Inc.  
ATCO Group  
Naresh Bangia  
Bealight Foundation  
Dennis Bennie  
Brendan Calder  
John (MBA '81) and Mary Cassaday  
Confederation Life Insurance Co.  
Peter P. Copses (BCOM '80)  
and Judith V. Mueller (BCOM '80)  
Daniel Debow (MBA '00)  
and Jordana Huber  
Donner Canadian Foundation  
Bob Ewen (MBA '77)  
Haig Farris  
FirstService Corporation  
Jim and Mary Fisher  
T. C. Fong  
General Motors of Canada Limited  
Globalive Communications Corp.  
Great-West Life, London Life  
and Canada Life  
Honda Innovations  
HSBC Bank Canada  
Hyatt Family Foundation  
IBM Canada Ltd.  
The Honourable Henry N. R. Jackman  
David and Karen Jackson  
The Jay and Barbara Hennick  
Family Foundation  
The Kavelman-Fonn Foundation  
The Lawrason Foundation  
Leacross Foundation  
Roger Martin  
Nesbitt Family  
Nicol Family Foundation, James Nicol  
Osler, Hoskin & Harcourt LLP  
Parnoja Family  
Petro-Canada  
PwC  
Procter & Gamble Inc.  
RioCan Real Estate Investment Trust  
The Rockefeller Foundation  
Nigel W. Stokes (MBA '87)  
The Vanguard Group, Inc.  
Neil Wainwright  
Mark D. Wiseman (MBA '96)  
and Marcia T. Moffat (MBA '96)  
Women in Capital Markets  
Xerox Canada Ltd.  
Anonymous

---

## \$100,000-\$249,999

Avenir Consolidated Corporation  
BDC Capital  
W. Geoffrey Beattie  
Harvey Botting (MBA '85)  
BP Canada Energy Company  
The Bregman Family  
Michael Bregman  
Yetta Bregman  
Brookfield Asset Management Inc.  
Campbell Soup Company Ltd.  
Charles Chung (MBA '78)  
John C. Clark  
Co-Steel Inc.  
Frederick C. Dawkins (BCOM '67)  
E.I. du Pont Canada Company  
The Financial Research Foundation  
of Canada  
Norman Fraser (BCOM '65, MBA '68)  
Michael and Bonnie Goldberg  
Google Inc.  
Mary B. (MBA '85) and  
Graham Hallward  
Leonore V. Hetherington  
Chunping Huang  
The John Dobson Foundation  
Ann Kaplan (MBA '05)  
Joseph Kerzner  
Michael and Sonja Koerner  
Raymond P. Kruck (BCOM '89)  
The Larry & Judy Tanenbaum  
Family Foundation  
Liberty Global, Inc.  
Magna International Inc.  
Robert D. (BCOM '66) and  
Joan McKeracher  
McKinsey & Company  
Moody's Corporation  
Murray and Susan Armitage  
Foundation  
Julia Kung Chi Or  
Rose M. Patten  
Jim Pattison  
Carol S. Perry (MBA '78)  
The Peter and Melanie Munk  
Charitable Foundation  
Rosemary Phelan  
Richard Coleman Powers  
Qualcomm Incorporated  
John Risley  
The Estate of Joyce L. Robertson  
Melinda M. Rogers (MBA '97)  
The Rossy Family Foundation  
Seagate Technology Inc.  
Seyton Limited  
Roger J. Short (MBA '79)  
Skoll Foundation  
Sun Life Financial  
Thomson Reuters  
The Estate of William O. Twaits  
(BCOM '33)  
Parvez Tyab  
Anonymous (9)



---

**\$50,000-\$99,999**

Charles and Darlene Allen  
Daniel Almenara (MBA '92)  
Jamie (BCOM '76) and Patsy Anderson  
James Archer Shee  
BCE Inc.  
Birch Hill Equity Partners  
Derek Brown  
Gordon and Jean Campbell  
Canadian Securities Institute  
Research Foundation  
Canadian Tire Corporation Limited  
Capital IQ  
Glenn H. Carter  
James W. Davie (BCOM '65)  
Michael B. C. Davies  
Debbie and Donald Morrison  
Family Foundation  
George and Katherine Dembroski  
Doane Raymond Pannell  
Bryce W. and Nicki Douglas  
Endla & John Gilmour Foundation  
Fednav Limited  
Wade Robert Felesky (MBA '01)  
Fidelity Investments Canada Ltd.  
Ford Motor Company of Canada,  
Limited  
Georgian Partners  
F. Douglas Gibson  
Barbara R. Griffiths  
Richard F. Haskayne  
Renee Haugerud  
David and Lenore Hawkey  
Healthcare of Ontario Pension Plan  
(HOOPP)  
Walid Hejazi  
Hewlett-Packard (Canada) Co.  
David Ho-A-Yun  
Home Capital Group Inc.  
John and Michelle Hull  
Invesco Canada  
Kenneth Lefolii Enterprises Limited  
Spencer Lanthier and Diana Bennett  
Joyce Lee  
Marjorie and Don Lenz  
Albert (MBA '88) and Teresa Li  
D. Bruce Macdonald  
Managerial Design Corporation  
John H. and Netilia McArthur  
Margaret and Wallace McCain  
McCarthy Tétrault LLP  
Doug McGregor  
Michael N. Melanson (MBA '87)  
The Minto Foundation Inc.  
Mississauga Board of Trade  
Mihnea Moldoveanu and Violeta Luca  
Molson Inc.  
Moore Wallace Inc.  
William W. Moriarty  
Petro Mykulak  
Stephanie Mykulak  
Gordon and Janet Nixon

**OMERS**

Ontario Teachers' Pension Plan  
Optimum Talent Inc.  
Paul (MBA '51) and Patricia Phoenix  
Sandra and Jim Pitblado  
David Powell  
Andrew and Valerie Pringle  
Anita and Chandran Ratnaswami  
(DBA '77, MBA '79)  
Gail Regan (MBA '78)  
Paul Richards (MBA '62)  
Gerry Rocchi (MBA '81)  
John (BCOM '68) and Lynda Rogers  
Rotman International Centre  
for Pension Management  
Peter and Judy Russel  
Shelagh and David Wilson Fund  
at Toronto Foundation  
Daniel Shimmerman (MBA '96)  
Daniel F. Sullivan  
TorQuest Partners  
David L. Torrey  
TransCanada Corporation  
Victor Tung (MBA '12)  
Lorne Weil (BCOM '68)  
Wellington Financial LP  
Alan White (PHD '87) and  
Jo-Ann McDermott  
Glen Whyte (DBA '80, MBA '81)  
Roland (MBA '99) and Marni  
Wieshofer (MBA '91)  
William P. Wilder  
John W. L. Winder (BCOM '54)  
Chuck and Libby Winograd  
Tom and Ruth Woods (MBA '84)  
Anonymous (2)

---

**\$25,000-\$49,999**

Aecon Group Inc.  
AGF Management Limited  
Farhan Ali Khan (BCOM '04, MBA '08)  
Anur Investments Ltd.  
Barclays Capital Canada Inc.  
Paul and Sally Bates  
Kelly Battle (MBA '97)  
Joel A. Baum (MBA '85, PHD '89)  
David and Debby Beatty  
Jill Black (MBA '80)  
Blake, Cassels & Graydon LLP  
Laurence and Shiva Booth  
Fares Boulos (MBA '79)  
In Memory of Troy Bey Braithwaite  
Bridgeable  
CAE Inc.  
Canadian Coalition for Good  
Governance  
CBC Radio-Canada  
Gordon F. Cheesbrough  
David and Valerie Christie  
CIBC World Markets  
Adrian J. Coote  
Costco Wholesale Canada Ltd.  
David Crawford (MBA '91)  
and Julia Holland  
The CSL Group Inc.  
Cullen Family  
Robert J. Dart (BCOM '59)  
Timothy D. Dattels  
Joseph R. D'Cruz  
Diestel Family  
Victor (BCOM '88) and Maureen Dodig  
Dave Donnan (MBA '82)  
Michael Dunn (MCOM '49)  
Empire Company Ltd.  
Martin and Nancy Evans, Colleagues  
and Friends  
Richard and Rana Florida  
Flow Traders US LLC  
The Gerald Schwartz  
and Heather Reisman Foundation  
Irving and Gail Gerstein  
Michael Gibbens (MBA '11)  
and Julie Lassonde  
David Gilmour  
Kevin A. Glass (MBA '92)  
Martin and Susan Goldberg  
Myron J. Gordon  
Graywood Developments  
Wendy G. Hannam (MBA '83)  
Russell J. Hiscock (MBA '77)  
Honeywell  
Husky Injection Molding Systems Ltd.  
Hydro One  
IGM Financial  
Intact Financial Corporation  
Jarislowsky Foundation  
P. Thomas Jenkins  
Donald K. Johnson  
Moti G. Jungreis (MBA '96)  
Julie Khanna  
Essam Khashoggi  
John Knebel and Marge Watters  
Knebel  
Merle Kriss (MBA '77)  
George (BCOM '82) and Leanne Lewis  
Loblaw Inc.  
The Family of Ms. Catherine M. Logie  
Jevon MacDonald  
Kerrie MacPherson (BCOM '86, MBA '91)  
Alvaro Mallarino In Black and White  
Real Estate (MBA '04)  
Maple Leaf Foods Inc.  
Joe Martin  
MathWorks  
Eugene C. McBurney

Tom McCurdy  
Anita M. McGahan  
John (BCOM '82) and Sandra  
McManus  
Medtronic of Canada Ltd.  
Frank Moore (MBA '61)  
Esther Mui (MBA '74)  
Sanjib and Bharati (Bee-Bee)  
Mukherjee  
New Routes to the Future Ecological  
Foundation  
Noranda Inc. and Falconbridge Ltd.  
Michael and Janet Norris  
P.A. Novelty  
Ontario Power Generation  
Mauro Pambianchi (MBA '81)  
Donald (MBA '62) and  
Gwynneth Parkinson  
Jake Phillips  
Richard and Karen Pilosof  
Plextron  
Process Research Ortech Inc.  
Resource Capital Funds  
Revera Inc.  
Elena Riabenko  
Paul (MBA '06) and Sue Riedlinger  
Jennifer Riel (MBA '06) and  
Stephen Leckey  
Dugald and Liz Ritchie  
Gordon M. Ritchie  
Rogers Communications Inc.  
Rotary Club of Mississauga  
Royal Insurance Company of Canada  
A. Edward Safarian  
David Samuel  
Andrew G. Scace  
Wes Scott (BCOM '68)  
Mary Verna Simmonds  
David Skurka (MBA '97)  
Paul Joseph Sorbara (MBA '05)  
Southwestern Bell Corporation  
Suzanne J. Spragge and Tim Benson  
The Sprott Foundation  
George Stalk  
Jo-Anne Stansfield  
Steelcase Canada Limited  
Margaret (MBA '76) and  
Andrew Stephens  
Don Tapscott and Ana P. Lopes  
Richard and Leanne Tavoso  
Teck Resources Limited  
TELUS Mobility  
Thai-Canada Economic Co-Operation  
Foundation  
Ellen J. Timbrell  
Toron AMI International Asset  
Management  
Natalie (MBA '89) and  
Geoff Townsend (MBA '87)  
Thomas Tutsch  
VC & Co. Incorporated  
Viewpoint Foundation  
Village Orthodontics,  
Dr. Frederick Murrell  
Mark Wellings  
The William Birchall Foundation  
J. Peter Williams (BCOM '65)  
The Honourable  
Michael H. Wilson (BCOM '59)  
Thomas A. Wilson  
Jia Lin Xie and Peter Zhu  
Janet and Bill Young  
Zellers Inc.  
Anonymous (6)

## Dean's Society

*Recognizing the School's most generous annual donors, whose investment in the vision and leadership of Rotman has enabled the School to achieve prominence in Canada and the world.*

*Dean's Society members have donated \$1,000 or more between May 1, 2017 and April 30, 2018.*

---

### Platinum \$10,000+

**Laurence\* and Shiva Booth**  
In Memory of Troy Bey Braithwaite  
**Charles Chung (MBA '78)**  
**David Crawford (MBA '91) and Julia Holland**  
**Norman Fraser (BCOM '65, MBA '68)**  
The Gerald Schwartz and Heather Reisman Foundation  
Martin and Susan Goldberg  
**Ann Kaplan (MBA '05)**  
Raymond P. Kruck (BCOM '89)  
**Kerrie MacPherson (BCOM '86, MBA '91)**  
**Anita M. McGahan\***  
Barry (BCOM '85, MBA '87) and Rose McInerney  
Frank and Patricia Mills  
**Nesbitt Family (MBA '85)**  
**Richard Coleman Powers\***  
**Anita and Chandran Ratnaswami (DBA '77, MBA '79)**  
**Gail Regan (MBA '78)**  
**John (BCOM '68) and Lynda Rogers**  
Joanna Rotenberg (MBA '01) and Andrew Armstrong  
Victor Tung (EMBA '12)  
Anonymous (3)

---

### Gold \$5,000-\$9,999

**Daniel Almenara (MBA '92)**  
James W. Davie (BCOM '65)  
**Diestel Family (MBA '02)**  
**Dave Donnan (MBA '82)**  
Roma and Roman Dubczak (BCOM '85)  
Bob Ewen (MBA '77)  
**Ambrose Fan (EMBA '92)**  
**Michael Gibbens (MBA '11) and Julie Lassonde**  
Kevin A. Glass (EMBA '92)  
**Wendy G. Hannam (MBA '83)**  
Richard F. Haskayne  
Russell J. Hiscock (MBA '77)  
**Albert (MBA '88) and Teresa Li**  
Alvaro A. Mallarino In Black and White Real Estate (MBA '04)  
**Michael N. Melanson (MBA '87)**  
**Mihnea Moldoveanu\* and Violeta Luca**  
Eamonn Percy (MBA '91)  
**David Powell**  
Paul Richards (MBA '62)  
**David Samuel**  
David Skurka (MBA '97)  
Paul Joseph Sorbara (EMBA '05)  
**Andrew Stephens**  
John W. Visser (MBA '86)  
Jeffrey Wendling (MBA '86)  
**Glen Whyte (DBA '80, MBA '81)\***  
**Tom and Ruth Woods (MBA '84)**  
Anonymous (2)

---

### Silver \$2,500-\$4,999

William I. Bongaerts  
**Harvey Botting (EMBA '85)**  
Derek Brown  
Ruth C. F. Chung (DBA '71, MBA '73)  
Michael Don Demeter (MBA '01)  
**Endla & John Gilmour Foundation**  
**Jim\* and Mary Fisher**  
Richard\* and Rana Florida  
**George W. P. Hayhurst (DBA '67, MBA '68)**  
Jack R. Hicks (MCOM '60)  
**Brian Howe (EMBA '93)**  
**John\* and Michelle Hull**  
Linda MacKay (MBA '06)  
**Esther Mui (MBA '74)**  
Paul Shugart (MBA '81) and Patti Perras Shugart (MBA '88)  
**Carol S. Perry (MBA '78)**  
**Gary Ryan (EMBA '01)**  
**Michael E. Schneider (EMBA '07)**  
**David R. Smith (MBA '06)**  
**Dilip Soman\***  
**Thomas A. Wilson\***  
Anonymous (2)

---

### Bronze \$1,000-\$2,499

**Ajay Agrawal\***  
Sidney E. Amster (MBA '82)  
**Fariba Anderson (EMBA '04)**  
**Jamie (BCOM '76) and Patsy Anderson**  
**Ann Armstrong (MBA '82, PHD '93)\***  
**Nouman Ashraf (BCOM '02, EMBA '06)\***  
**Kelly Battle (MBA '97)**  
Shawn L. Beber (MBA '96)  
Grace Y. Bi (MBA '06)  
**J. Richard Bird (MBA '71, PHD '75)**  
Ronald B.M. Blainey  
Richard Blickstead (MBA '76)  
Michael P. Bradshaw (MBA '93)  
Thomas M. Canning (MBA '79)  
**Donald A. Carmichael (MBA '74)**  
**Leanne Carson\***  
Francois Cartier (MBA '07)  
Lea Casas Callahan (MBA '13)  
**Tiziana Casciaro\***  
Eric Chan (MBA '77)  
**Matthew Robert Chapman (MBA '00)**  
**Flora Chen (MBA '01) and Sheldon Hing San Szeto (MBA '02)**  
Frank Chen (PHD '96)  
David K. Cheung (MBA '02)  
**Dennis (MBA '95) and Janice Choa**  
**Rex Chong and Noreen Chan (MBA '95)**  
**Paul Choy (MBA '02)**  
**Marlys Christianson\***  
**Peter Christoffersen\***  
**Susan Christoffersen\***  
Dennis K. Chu (MBA '01)  
**Cornbill Associates (MBA '63)**  
**Kenneth Corts\* and Anna-Marie Castrodale**

Michael Daniels (MBA '05)  
Anita Yolande Davis (MBA '00)  
Leelah E. Dawson (MBA '91)  
**Alexandra De Freitas (MBA '08)**  
Enzo De Luca (DBA '70, MBA '71)  
**Sim Desai (MBA '05) and Sarah Huggins**  
Linfu Jeff Dong (MBA '01)  
**Eshrat Sayani and Peter Dungan\***  
Cheryl A. Farrow (EMBA '02)  
**David C. Ferguson (EMBA '88)**  
Warren W. H. Finlay (EMBA '92)  
Christopher T. Folan (MBA '95)  
**Kevin K. Fong (MBA '94)**  
**Ronald P. Fournier (MBA '62)**  
Rachel Gillespie (MBA '07) and Sean Martin (MBA '02)  
**Michael and Bonnie Goldberg**  
**Brian Golden\***  
**Avi Goldfarb\***  
Sudhanshu Govil (MBA '04)  
**Eleanor Gow (MBA '77)**  
**Catherine (Ward) Graham (MBA '01)**  
**Molline Green (MBA '98)**  
**Michael A. Hale (MBA '82)**  
**Mary B. (MBA '85) and Graham Hallward**  
**Cindy (MBA '94) and Mike Hansen**  
Wei He (PHD '01)  
**Frederick Heath (MBA '76, PHD '86)**  
**Tim Hendrickson (BCOM '93, MBA '98)**  
William E. Hewitt (MBA '67)  
**Anne Hilton\***  
**Stanley Y. Ho (BCOM '94)**  
Ronald G. Hosking  
**Peter Hundal (MBA '95)**  
James (MBA '86) and Elizabeth Iglesias  
**Heather-Anne Edwards Irwin\***  
David Jacobsen (MBA '98)  
Christian L. Jeppesen (MBA '93)  
N. Lynn Jolliffe (MBA '79)  
**Raymond Kan\***  
**Ahmad Khraishi (EMBA '12)**  
David Klug (BCOM '70)  
**John Knebel (MBA '73) and Marge Watters Knebel**  
**Merle Kriss (MBA '77)**  
**Asher Lai (MBA '05)**  
**Jay W. Lee (MFIN '11)**  
Joseph P. Leon (BCOM '83, MBA '86)  
**Michael S. Levy (MBA '69)**  
Ocean Yuanyang Liang (MBA '07)  
Andrew G. Lim (MBA '04)  
Alex Limion (MBA '01)  
George Jialiang Liu (MFIN '10)  
Joseph (MBA '86) and Lina Loparco

Shouyi Ma (MBA '07)  
**Anne Macdonald (MBA '01)\***  
 Shirley and Neil A. Macdougall  
 (MCOM '60)  
 Tiff\* and Rosemary Macklem  
 Alvin W. Mak  
**Roger Martin\***  
 Elena Mascarenhas (BCOM '81)  
**Marwan Mazraani (MBA '07)**  
**Tom McCurdy\***  
**Ken McGuffin\***  
 Maria Milanetti (MBA '89)  
 Tyler G. Moniz (MBA '77)  
**Angela Moy (MBA '96)**  
**Jay Nicholson (MBA '02)**  
**John D. Ogden (MBA '62)**  
 James Edmund Osler (MBA '93)  
**Joanne Oxley\***  
**Donald (MBA '62) and Gwynneth  
 Parkinson**  
 David Patterson (MBA '79)  
 Tejen Ray (MBA '05)  
**Marlon Reid (MFIN '10)**  
 Leslie Joy Richmond (MBA '03)  
 R. Douglas B. Robertson (MBA '85)  
**Joe Rooney (MFIN '10)**  
**Jim Sami (EMBA '92)**  
**Deanne Saunders\***  
**Kim Shannon (MBA '93)**  
 Wei Shen  
**Lawrence Shum (MBA '86)**  
**Christopher Patrick Stamper  
 (MBA '94)**  
**Maureen Stapleton (MBA '80)\***  
 Gregory Stewart (MBA '13)  
 Michael A. Tambosso  
 Liz and Matt Tedford (MBA '95)  
**Geoffrey\* and Kenya  
 Thompson-Leonardelli**  
 Myha Truong-Regan (MBA '10)  
**Thomas Tutsch**  
 Annette Verschuren  
 Cathy Vitkauskas\*  
**Edmond Vanhaverbeke (EMBA '89)**  
 Norris W. Walker (MCOM '58)  
 Tiffany Jing (MBA '12) and  
 Joshua Wong (MBA '11)  
**M. H. Franco Wong\***  
 Wilson Wai Shing Wong (EMBA '13)  
**Cornell Wright (MBA '00) and  
 Sarah McEvoy**  
**Albert Wu (BCOM '77, MBA '84)**  
**Eric Chuqiang Xiao (MBA '91)**  
**Jia Lin Xie\* and Peter Zhu**  
 Samuel Yen  
 Wuyang Zhao (PHD '17)  
**Weimin Wendy Zhou (MBA '04)**  
 Anonymous (7)

## First Decade

*Alumni can join the Dean's Society in their first decade after graduation with an annual contribution of \$100 multiplied by the number of years since they graduated.*

Ghazaleh Almeida (EMBA'17)  
**Claudiu Crivat (MFIN '13)**  
 Giulio Fazzolari (EMBA '17)  
 Hondy Hung (MBA '11)  
 Sladjana Jovanovic (EMBA '17)  
 Anton Lina (MBA '14)  
 Faye McDermid (EMBA '17)  
 Vikas More (EMBA '17)  
 Dema Najjar (EMBA '15)  
 Edward On (MBA '14)  
 James Stuart (MBA '16)  
 Felix Y. Tsui (BCOM '17)  
 Sunil Viswanathan (MBA '14)  
**Cindy Wagman (MBA '13) and  
 Chris Shantz**  
 Edward Yang (MBA '13)

## Corporate Donors

*Recognizing our generous corporate partners, who made annual contributions of \$1,000 to \$24,999 between May 1, 2017 and April 30, 2018.*

### \$1,000-\$24,999

Bank of Canada  
 Bell Canada  
**BMO Financial Group**  
 Bridgeable  
 Caldwell Securities Ltd.  
 CAPREIT  
 Cisco Systems Canada Co.  
 EY  
 Flow Traders US LLC  
 Graywood Developments  
**IBM Canada Ltd.**  
 Institutional Equity Traders  
 Association  
**KPMG LLP**  
 Mackenzie Investments  
 Manpower Inc  
 MathWorks  
 McDonald's Restaurants  
 of Canada Ltd.  
 Meloche Monnex Inc.  
 OptionMetrics LLC  
 PwC  
 Raymond James Canada Foundation  
**RBC Foundation**  
 Schonfeld Strategic Advisors LLC  
 St. Michael's Hospital Foundation  
 Sun Life Financial  
**TD Bank Group**  
 TD Securities  
 Uforse Education Group Inc.  
 Urbana Corporation  
**Village Orthodontics, Dr. Frederick  
 Murrell**  
 WorldQuant  
 Wellington Financial LP  
 Anonymous (3)

## Other Annual Fund Contributions

*Recognizing alumni and friends who made a donation in support of the School between May 1, 2017 and April 30, 2018.*

### \$1-\$999

Meghan Abbott\* and Ross Strowger (MBA '15)  
Diana Addeo (BCOM '96)  
Victoria Afanasyeva (MBA '14)  
Angela M. Albini (BCOM '81)  
Gordon J. Allan (MBA '85)  
Lucio F. Ammerata (BCOM '82)  
**Salvatore Amodeo (BCOM '90)**  
Frank Liqun An (MBA '08)  
Christon Anastopoulos (BCOM '91, MBA '09)  
David E. Andrews (EMBA '99)  
**Hugh J. Arnold\***  
Stevie Asselstine\*  
Neil Aubuchon (MBA '98)  
Gina Awdish (MBA '06)  
Zoya Babar\*  
Matthew Barasch (MBA '01)  
Susan M. Barclay (MBA '91)  
**Linda Basile\***  
Travis Bateman  
Rudolph S. Beharysingh (MBA '87)  
Arzhang Beheshti (MBA '04)  
David G. Bell (MBA '88)  
Jeffrey P. Berk (BCOM '87, MBA '89)  
Jaclyn Berlin  
Michal Berman (MBA '03)  
**Oded Berman\***  
Lance Stanley Bialas (MBA '10)  
William J. Biggar (BCOM '74, MBA '75)  
**Lisa Bigioni\***  
James W. Billington (MBA '87)  
David A. Bishop (DBA '69)  
Douglas K. Blair (BCOM '65, MBA '67)  
Ira Blatt (DBA '76)  
Irene Bloss  
Richard Blundell\*  
Maddalena Boccardi  
Albert T.-C. Boey (BCOM '78)  
Carrie Bogante  
Azi Boloorchii (MBA '09)  
Andrew C. Bome (MBA '02)  
Theodore S. Borek (MBA '75)  
**Ron N. Borkovsky\***  
**Francesco Bova\***  
**Sheila Boyce (MBA '96)**  
June Brant  
Jamie S. Britton  
**George C. Britton (MBA '67)**  
**Leonard J. Brooks (BCOM '66, MBA '67)\***  
Heather Broughton (MBA '92)  
Stephen Brown  
**Courtney Brownell\***  
Elysse Buchalter  
Shelley Buchalter  
**Allen D. Budd (DBA '72, MBA '83)**  
**Pym Buitenhuis\***  
Ron Bull  
**Darryl Bush\***  
Costel Cada (MFIN '12)  
Angela M. Cadena (MBA '92)  
E Cadloff Prupas  
**Robert John Carr (MBA '88)**  
Dennis H. Cartwright  
Paul M. Casey (BCOM '85)  
Glenn A. Castellarin (BCOM '77, MBA '91)  
Jessica Cayne  
Salvatore Cesario (BCOM '78)  
**Garry Yiu Chu Chan (EMBA '03)**  
Margaret P. Chan (MBA '83)  
Amy Charette (MBA '00)  
Vijay Krishna Chaudhry (MBA '70)  
Gautam Chaudhuri (MBA '84)  
Michael Chazot (MBA '99)  
Zhi Chen (PHD '06)

Si Yuan Chen  
Victor Chen (EMBA '99)  
David J. Chin (DBA '78)  
Edward C. Chin (MBA '98)  
**Andrew Tat Tin Ching\***  
**Jimmy Wei Hsing Chiu\***  
Wendy I. Chong Edgell (MBA '02)  
**Cynthia Chong\***  
Frank G. J. Chown (BCOM '64)  
**Jim Christie (MBA '89)**  
Andre Augusto Cire\*  
Class of 5T7 Commerce  
Reta Coburn (EMBA '07)  
Scott D. Colbourne (MBA '91)  
**Alyson Colon\***  
Christine Concannon\*  
Meg Connell\* (MBA '91)  
Lisa Conroy  
Michelle (MBA '01) and Francis Coulombe  
James D. Coutts (MBA '99)  
Sam Cukierman  
R. Bradley Cumming (MBA '91)  
K. Allan Cuzen (BCOM '57)  
Mark Dashevsky (DBA '81, MBA '83)  
Trevor DaSilva (MBA '88)  
Andrew J. Davies (MBA '05)  
Rosa M. Del Campo  
**Shaun Desai (MBA '06)**  
Lucio T. Di Clemente (MBA '90)  
Jennifer Lynne Dietrich  
Nicholas (MBA '75) and Susan Dietrich  
Laeticia Diniz\*  
Michael Dixon (BCOM '83)  
A. (MBA '76) and J. Dobranowski  
Rachel Doll (MBA '04)  
**Gordon Donnelly (MBA '90)**  
Sheldon Dookeran\*  
Andrew Stephen Douglas\*  
**Florin Draga\***  
Linda Drisdelle (MBA '04)  
Alan Dunn (MBA '02)  
Maggie Dymond\*  
Johannes Dyring  
**Alexander Edwards\***  
**Simon El-Abou\***  
**Daniel Ellul\***  
David H. Elsner (MBA '05)  
Deborah Epstein  
Nima Evans (MBA '12)  
Teng Fan (MBA '08)  
Diane Fantinato  
Ali Fathi  
**Roman H. Fedus (MBA '71)**  
**Cameron Fellman (BCOM '64, MBA '65)**  
**Annette G. Filler\* (BCOM '87)**  
David N. Finkelstein  
Thomas Fisher  
Diana Flaminzeanu (EMBA '01)  
Thomas Flanagan (BCOM '79)  
David and Yvonne Fleck (MBA '91)  
Julie Foisy\*  
**Sean Forbes\***  
Julio Fournier (MBA '06)  
D. I. Fraser (MCOM '57)  
Garth D. Frazer\*  
Jessica Freeman\*  
Penelope Fridman (MBA '91)  
Christopher Gordon Gage (MMPA '05)  
Laura A. Gainer (MBA '90)  
John E. Gallant (MBA '76)  
**Joshua Gans\***  
Pamela Garbutt  
Ena Garmaise (PHD '92)  
**Michael A. Garratt (MBA '89)**  
**Ted Gastis**  
Patrick J. Gauch

**Leigh Gauthier\***  
Craig M. Geoffrey\* (MBA '07)  
Rina D. Gerson (MBA '13)  
Gary W. Getson (MBA '67)  
Olivia Gissing  
Ioannis Gitas  
Hezl & Barbara Glaziel  
Michael A. Glenday (MBA '91)  
**John Glicksman (MBA '77)**  
Robert S. Goldberg (MBA '82)  
Marni Goldman  
Lorrie and Krystyna Goldstein  
Kevin R. Goldthorp (BCOM '90, MBA '99)  
R. Paul Goodyear (BCOM '86)  
Gaurav Gore (MBA '10)  
**Thomas E. Gray (MBA '75)**  
Jared Eliot Green (MBA '06)  
Roslyn Greene  
Issie Gross  
Lawrence N. Gross (MBA '57)  
Sumit Grover (MBA '09)  
**Charles R. Hall (MBA '98)**  
**Robert D. Hamilton (MBA '71)**  
Delaine Hampton\*  
Kenneth L. Harlock (BCOM '65)  
**Larry Harrison\***  
**Sandra Heitner**  
Bill Hellings (MBA '70)  
Christina Henderson\*  
**Walter J. Hendry (MBA '63)**  
Karen Henrikso (MBA '12)  
**Barry B. Hercus (MBA '62)**  
Ellen Hersh  
**Jennifer Hildebrandt\***  
Christopher T. Hill (MBA '89)  
Edna Hon (MBA '04)  
Angela Hong (MBA '02)  
Anthea J. Horne (BCOM '82)  
William James Hosken (BCOM '04)  
Rong Hu (MBA '95)  
**Ming Hu\***  
Chang S. Huang (MBA '05)  
Yai Chen Huang (MBA '10)  
James Hughes (MBA '77)  
**Eva Hughes\***  
Andrew S. Hukowich (MBA '87)  
Thomas J. Hundak  
**Robyn Hunter\***  
Scot D. Hutchinson (EMBA '03)  
**Donald Hyslop (MBA '85)**  
James Inglis (MBA '08)  
**Andrew James Jenkins (EMBA '03)**  
Dan Johnson (MBA '98)  
David J. and Sandra A. Johnston  
Don and Susan Johnston (MBA '69)  
David A. Johnstone (MBA '62)  
Justyna Jonca\*  
Bill Jones (MBA '68)  
Duncan Jones\* (MBA '89)  
Linda Jussaume (EMBA '06)  
**Gabriela Kampouris\***  
**Raymond Kan\***  
Gregory Kanargelidis (BCOM '87)  
**Bong Suk Kang (BCOM '11)**  
**Kenneth S. Karmona (MBA '74)**  
Laddy Kaszowski  
Neil and Janet Katz\*  
John H. Kearns (MBA '76)  
Alison Kemper (MBA '04, PHD '12)  
Farhan Ali Khan (BCOM '04, MBA '08)  
Mulhim Khan  
**Freeda Khan\***  
Maya Khanna (MBA '10)  
Bill Kilfoyle (BCOM '64)  
Richard P. Kirchner (MBA '82)  
**Benson J. Kirsh (DBA '74, MBA '75)**  
**James Kiszyk\***

Derrick Knie (MF '09)  
 George Kosmas (BCOM '93)  
 Dmitry Krass\*  
 Subodh Kumar (MBA '76)  
 Aakrit Kumar (BCOM '08)  
 Moji A. Kuye (MBA '96)  
**Andrea Kwan\***  
 Karlos Kwok (BCOM '04)  
 Bonnie Gar-Kay Lam\*  
 Stephannie A. Larocque (PHD '09)  
 Brian S. Lass (BCOM '79)  
**Gary Latham\***  
 Martin Lau (MBA '07)  
 Kerry L. Lawson (MBA '91)  
 Phong Le (MBA '90)  
 Robert J. Leblanc (MBA '92)  
**Mara Lederman\***  
 Stanley F. M. Lee (BCOM '77)  
 Joseph Leinwand (MBA '71)  
 John P. Leon (MBA '84)  
 Bruno Lepore (MBA '85)  
 Charles Lesaux (MBA '05)  
 Karen Lev (MBA '00)  
**Sing Chung Matthias Li**  
**(BCOM '78, MBA '79)**  
 Paul Yiming Li (MBA '05)  
 Jie Li (MBA '15)  
**Sophie Xiaoyu Liang (MBA '07)**  
**Scott Liao\***  
**Kristen Ligers\***  
 Chris Liu & Family\*  
 Connie Kang Liu (MBA '08)  
 George T. Liu (MBA '05)  
**Rod Lohin\***  
 Dirk Lohmann (MBA '07)  
 Edward S. Long (MBA '65)  
 Jennifer Long (MBA '08)  
 Donald L. Love (MCOM '58)  
 Jelani Lowe\*  
 Rob Lowry (MBA '88)  
**Hai Lu\***  
 Sasha Genine Lucas\*  
 Peter Ludwig (MBA '78)  
 Katherine S. Lui (BCOM '87)  
 Mary C. Lyne\*  
 Gerald Machtinger  
 Peter B. MacKinnon (BCOM '65)  
 Jason MacNeill (MBA '08)  
**Kari-Anne Macpherson\***  
 James MacQueen (MBA '05)  
**James P. Mahoney (MBA '88)**  
**Jan Mahrt-Smith\***  
 Kevin Lem Mak (MFIN '10)  
 Agnes Mak\*  
 Kevin Mak\* (BCOM '07)  
 Anna Makakhova  
 John W. Malcolm (MBA '85)  
 Ellen Malcolmson  
 Azarakhsh Malekian\*  
**Daphne Mao (MBA '00)**  
 Kelly Margaret Marcinwi (MBA '15)  
 Gerardo Margolis (MBA '03)  
**Andy Mark (BCOM '81)**  
 Janet C. Martin (MBA '79)  
 Janice P. Martin (MBA '81)  
 Abigail Mason  
**John M. Maxted (EMBA '95)**  
 Brian J. McAulay (BCOM '79)  
 Elizabeth W. (MBA '05) and  
 Andrew McBeth  
**John M. McDiarmid (BCOM '91)**  
**Patrick McEnroe\***  
 Gilbert McIntee (MBA '72)  
 Dennis McKee (MBA '70)  
 Niamh McKenzie\*  
 Eleanor Mae McLaren  
**Krista Beth McLeod (MBA '01)**  
 Ross McMullen (MCOM '59)

Peter R. McMullin (MBA '67)  
 Rachel Megitt (MBA '10)  
 Bruce F. Melhuish (MBA '84)  
 Erin Miller\*  
 Ian A. Mills (MBA '87)  
**Joseph Milner\***  
 David B. Miner (MBA '79)  
**Navaz Mistry**  
**Partha S. Mohanram\***  
 Jennifer Molluso (MBA '05)  
 Jacqueline Monahan\*  
 William C. Moore (DBA '72, MBA '74)  
**Sridhar Moorthy\***  
**Roderick C. Morrison**  
**(DBA '70, MBA '71)**  
 Shahzad Muhammad (MBA '12)  
 Gerry Murphy (MBA '90)  
 Megann Murphy\*  
 Bruce Murray (MBA '87)  
**Lina Murray\***  
 Al Nagaraj (MBA '01)  
 Alison Nankivell  
 Sarah Neilson (MBA '94)  
 Drew Ness (MBA '98)  
 Robert Man-Chiu Ng (MBA '93)  
 Stephenny Ng (BCOM '16)  
 Bongji Ngugama\*  
 Thu Trang Nguyen (MBA '14)  
 Gregory Nielsen (MBA '05)  
 Larry J. Noble (MBA '71)  
 Colin Oerton (BCOM '86)  
**John Oesch\***  
**Greta J. Ogden (BCOM '55)**  
 Catherine A. O'Neill  
 James K. Oneschuk (MBA '88)  
 Abimbola Oresegun (MBA '11)  
 John T. Ostrander (MBA '99)  
 Patrick Joseph Tulang Pagtakhan  
 (MBA '07)  
 Bohdan L. Pahuta (MBA '77)  
 Arun K. Palit (MBA '99)  
 Chris Pandoff (EMBA '05)  
**Maria Parente\***  
 Andreas Park\*  
 Eric M. Pascal (BCOM '85)  
**Lynda Paterson\***  
 Robert J. Patterson (MBA '87)  
**Professor Peter Pauly\***  
 Myrna R. Pearlmutter-Hudes  
 Israel Pelc  
**Ian Pellat**  
 Gail and Paul Pellat  
 Sydney Pellat  
 Rudolph G. Penner  
 Deborah Perelman  
 Melanie Perry Cooper (MBA '07)  
 Aleksandar Petrovic (MBA '05)  
 Michelle Phillips (MBA '10)  
**Eva J. Piorkowski\***  
 David A. Pleasance (MBA '91)  
**Joseph P. Polito (DBA '77, MBA '81)**  
 Angela Pomponi  
**Pradhan Prabhakara (BCOM '01)\***  
 Gerry M. Preville (MBA '82)  
**Ilo Imre Puhm (DBA '71, MBA '74)**  
 Uttam Purushottam (MBA '06)  
**Caroline Pye\***  
**Jeffrey Michael Quinlan\***  
 Edward Ra (MBA '95)  
 Gordon Rabinovitch  
**Leonard Racioppo (MBA '79)**  
 Subramanian Ramanathan (MBA '07)  
 Joyce Rankin (MBA '05)  
 Justin Rawlinson (BCOM '07)  
 Nell Redley\*  
 Edith Reiss  
**Jack Rhind (BCOM '42, MCOM '53)**  
**Gordon Richardson\***

Lisa Richter Davey (MBA '00)  
 Brian Riddell (BCOM '67)  
 Jessie C. Roberson (MBA '88)  
 Tammy Robinson-Simmons (MBA '14)  
 Luis J. Rodriguez  
 Gonzalo Romero  
 John Rorstad (MBA '09)  
 Yulia Rosenberg-Falus  
 (BCOM '03, MBA '06)  
 Deanna Rosenswig  
 Wendy Rotenberg (MBA '85)\*  
 David Rourke (MBA '97)  
 Bryan Antony Rowe (MBA '02)  
 Sally Rubin  
**Edward P. Runge (MBA '63)**  
 Raymond H. Rupert (MBA '85)  
 Matthew Russell (MBA '13)  
 Rodney J. Russell (MBA '76)  
 Robert G. Rutledge (MBA '91)  
**Thomas A. Ryall (BCOM '80)**  
**Adele Sacks\* and Jamie Spotswood**  
 Ali Salahuddin (MBA '96)  
 Katie Salem (BCOM '92)  
 Baljit Salh (MBA '99)  
 Joanne Sallay  
 Adina Saposnik (EMBA '09)  
**Deanne Saunders\***  
 Mark Scarrow (BCOM '83)  
 Leah and Allan Schneiderman  
 Kurt M. Scholz (MBA '90)  
 Lorna J. Schroder (MBA '86)  
 Marlene and David Sefton  
 Jim Seidewand (MBA '74)  
 Mark Seymour\*  
 Sasi Shanmugarajah (MBA '10)  
 Darren Vincent Shaughnessy  
 (MBA '03)  
**Geeta Sheker\***  
 Kazuki Shikaze (MBA '71)  
 Norman (MBA '92) and Janet Shiner  
 (MBA '04)  
 David C. Shnier (MBA '81)  
 Goldie Sigal  
**Brian Scott Silverman\***  
 Manfred P. Simon (BCOM '68)  
**Valeria A. Sladojevic-Sola\***  
 Peter L. Slan (MBA '94)  
 Gregory W. Smith (MBA '98)  
**David Allan Soberman (PHD '96)\***  
 Sandra Sparks\*  
 Theodore H. Spevick  
 Peter A. Sprukulis (MBA '85)  
 Jennifer Lynn Steckel Elliott (MBA '99)  
 R. David Stewart (MBA '04)  
 Stephen Stewart (BCOM '02)  
 Toby Mina Stewart (MBA '94)  
**Dragan Stojanovic\* (BCOM '03)**  
**Ron Sturk (MBA '94)**  
 Peter M. Sullivan (MBA '97)  
 Laurel Sutton (MBA '06)  
 Linda C. Swartz (MBA '84)  
 Mark B. Synnott (MBA '90)  
 Andrew J. Szonyi (MBA '72)  
 Dariusz P. Szypula (MBA '10)  
**Joseph Yiu-Tong Tam (MBA '90)**  
 Michael Tamayo (MBA '96)  
**Jennifer Tan\***  
 David S. Tanner (MBA '83)  
 Sohaib Tariq (BCOM '03, MBA '09)  
 Ralph R. Tassone\* (BCOM '00)  
 Jane E. Taylor\*  
 Eva Tentere (MBA '10)  
 Alice Thomas (MBA '94)  
**Evelyn Thomasos\***  
**Andrew Thomson (MBA '90)**  
**Andras Tilcsik\***  
 Suzanne Tobin\*  
 William Edgar Toyne (BCOM '50)

Tram Tran (MBA '08)  
**Daniel Trefler\***  
 Gerhard Trippen\*  
**Kaylie S. Tse\***  
 Victor Tsui (BCOM '80)  
 Robert Todd Vandervelde (MBA '00)  
 Robertson J. Velez (MBA '06)  
**Anil Verma\***  
 Paul F. Vyrosto (MBA '76)  
**Alyson Waite\***  
 Alyson Walker (MBA '05)  
 Alex Xuyang Wang (MBA '00)  
 Yu Wang  
**Sheel Webber**  
 Trent Webster (MBA '97)  
**Jason Wei\***  
 Walter Wells (MBA '62)  
 Michael D. Wennberg (BCOM '73)  
 Marilyn L. Wertman  
 Scott White (EMBA '14)  
 Kippy Wiegand (MBA '93)  
**Alan Wight (MBA '92)**  
 Suzanne Wilcox (MBA '96)  
 Alison M. Wiley (MBA '91)  
 Alison L. Williams (MBA '88)  
 Roy G. Williams (MCOM '55)  
 Jack Wiltzer  
**Kegan Winters (MBA '08)**  
 Vincent Wong (MBA '08)  
 Jason Woo (BCOM '07)  
 Nicola Woods\*  
**Robert Wood-Fat\***  
 Zhen Xiang (MBA '07)  
**Baohua Xin\***  
 Vicky Yang (MBA '14)  
**Chai Him Yee (MBA '74)**  
 Joan Young (MBA '06)  
 Jessica Yu\*  
 Elliot Yung (BCOM '00)  
 Sarideen Abu Zahra (BCOM '13)  
**Michael K. Zerbs (MBA '89)**  
 Jilei Alvin Zhang (MBA '10)  
 Wei Zhang (MBA '14)  
 Zheng Zhang (BCOM '07, MFIN '12)  
 Jingbo Zhang\*  
 Minnie Zheng (BCOM '12)  
 Jun Zhou (PHD '10)  
 Jeffrey Zietlow (MBA '04)  
 Anonymous (8)

*Note:  
 Names in bold indicate five-year  
 consecutive donors. Asterisk  
 indicates a faculty or staff member.  
 Education designations are limited  
 to Rotman alumni.*

*We apologize for the accidental  
 misspelling or omission of  
 donor names. If you have not been  
 appropriately recognized, please  
 contact us and we will correct the  
 oversight in future publications.*



\$25,000,000+  
Marcel Desautels  
Sandra and Joseph Rotman

\$10,000,000 - \$24,999,999  
Michael Lee-Chin and Family  
Anson Chan

\$1,000,000 - \$9,999,999

BMO Financial Group  
Mark S. Bonham  
Anson Chan  
CIBC  
CIT Financial Ltd.  
CN  
Comcast Corporation  
Sydney Cooper and Family  
Corus Entertainment Inc.  
Chartered Professional Accountants of Ontario  
(CPA Ontario)  
Richard J. Currie  
EY  
Margaret and Jim Fleck  
Douglas and Ruth Grant  
Donald A. Guloien and Irene Boychuk  
Daisy Chiu-Fung Ho  
The Joe Weider Foundation  
The John and Deborah Harris Family  
Foundation  
KPMG LLP  
Lee and Margaret Lau  
Manulife  
Maple Financial Group Inc.  
Martin Ossip Family at the Jewish Foundation of  
Water Toronto  
Judy Mitchelson  
City of Economic Development and

\$500,000 - \$999,999  
Canadian Pacific  
The Max B. E. Clarkson Family  
Deloitte  
William Dawson  
Anthony and Shari Felt  
John Francis  
Global Risk Institute in Financial Services  
Edward J. Korngiehl  
Sonia and Arthur Labatt  
Molson Worldwin  
MOS Inc.  
Microsoft Canada Co.  
National Bank of Canada  
National Bank Financial  
Power Corporation of Canada  
Royal Trust Corporation of Canada  
William and Phyllis Weiss  
Anonymous

\$250,000 - \$499,999

\$100,000 - \$249,999

\$50,000 - \$99,999

\$25,000 - \$49,999

\$10,000 - \$24,999

\$5,000 - \$9,999

\$2,500 - \$4,999

\$1,000 - \$2,499

\$500 - \$999

\$250 - \$499

\$100 - \$249

\$50 - \$99



