



Rotman School of Management
UNIVERSITY OF TORONTO

**Rotman
Career Services**

Full-Time MBA Employment and Salary Report

2021-2022

Contents

Director's Message	1
Full-Time MBA Employment	3
Full-Time MBA Internships	6
Companies Hiring at Rotman	9
Connect with Rotman Career Services	13

Director's Message



Lyla Korhani

Director, Career Services
Rotman School of Management

This past year has been a period of challenge and renewed optimism, and once again, the Rotman community has drawn together to do what we do best: to innovate, to move faster, to constantly sharpen our relevance – to excel even as we set a higher standard.

At Rotman Career Services, we are proud of our work in matching our talented students and graduates with employers who expect the best, and whose needs continue to evolve and grow. Even in these unusual times, we have enjoyed unprecedented employment outcomes – a testament to the strength of the graduates themselves and the quality of the education they have received, as well as to our own team's ability to continually improve how we deliver our services.

In the past two years, our staff seamlessly transitioned to online service delivery, and our career support intensified. We launched a LinkedIn campaign highlighting our 2020 graduates across all programs. We delivered alumni coffee chats, lunch and learns and industry roundtables. We expanded our job leads beyond traditional career paths and shifted focus to emerging industries. We helped our students to network virtually and adopt online job search strategies. And we continued to deliver top service to our corporate partners.

The results speak for themselves: we are excited to announce that in the 2021-22 academic year, 97 percent of our Full-Time MBA graduates secured employment within six months of graduation. In the coming year we hope to build on our track record of success in delivering career transformation for our graduates. We are proud of our achievements, and of our contributions to strengthening the status of Rotman as a top-ranked business school with an impeccable reputation and global brand.

As global markets continue to evolve, so will our efforts to deliver the talent that employers need. We are excited to expand our corporate partnerships into international markets, developing new and innovative initiatives to prepare our students for careers in a rapidly-changing global economy.

To learn more about some of our other programs, including our Master of Management Analytics (MMA) and Master of Financial Risk Management (MFRM) programs, I encourage you to browse through our MMA / MFRM Employment & Salary Reports as well as our Recruitment Guide which offers more details on our eight graduate level programs and profiles of our remarkable students and graduates.

Sincerely,

Lyla Korhani

Director, Career Services
Rotman School of Management

Full-Time MBA Class of 2021 Profile

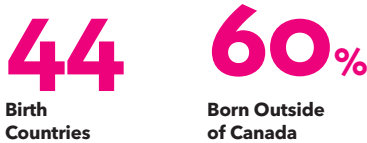
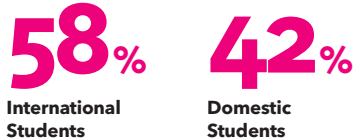
Class profile data is based on the incoming class of 2021 as of 2019



ACADEMICS



GLOBAL REACH



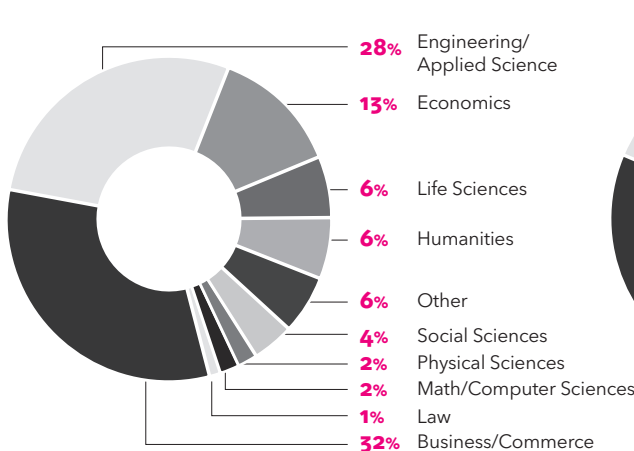
JOINT DEGREE



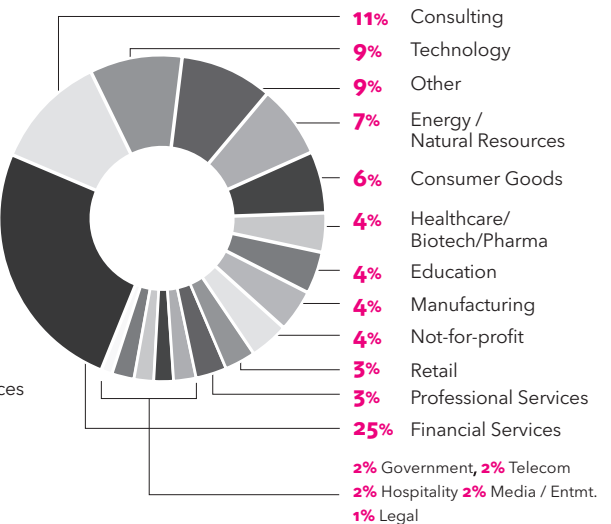
FELLOWS



ACADEMIC BACKGROUND



INDUSTRY BACKGROUND



Full-Time MBA Employment Class of 2021

Full-Time Employment Salaries (CAD)

Average Total Salary (inclusive of base, bonus, and other compensation)	\$123,438
Average Base Salary	\$104,622
Median Base Salary	\$92,000
<i>Salary data based on 79% of employed students who reported salary information.</i>	
Average Signing Bonus	\$18,291
Median Signing Bonus	\$12,500

26% of employed students who reported salary information received signing bonuses.

Full-Time MBA Employment Rates

96%

of Full-Time MBA students seeking employment were employed **3 months after graduation**

97%

of Full-Time MBA students seeking employment were employed **6 months after graduation**

FULL-TIME MBA EMPLOYMENT SALARIES BY INDUSTRY (CAD)

Industry	% Employed	Average	Range 25th percentile	Range 75th percentile
Financial Services	31.7%	\$97,236	\$80,000	\$100,000
Consulting	24.4%	\$113,694	\$90,000	\$128,750
Technology	11.2%	\$102,803	\$84,000	\$119,500
Other	10.2%	\$101,067	\$80,000	\$119,000
Legal Services	9.8%	\$131,816	\$88,400	\$199,830
CPG & Retail	5.9%	\$95,733	\$78,450	\$96,000
Healthcare	4.9%	\$86,538	\$80,844	\$85,750
Real Estate	2.0%	\$76,250	\$76,250	\$80,000

FULL-TIME MBA EMPLOYMENT SALARIES BY FUNCTION

Function	% Employed	Average	Range 25th percentile	Range 75th percentile
Accounting/Finance	24.9%	\$101,497	\$80,000	\$112,500
Strategy	21.5%	\$116,048	\$90,000	\$140,000
Other	16.1%	\$95,370	\$78,000	\$98,420
Marketing/Sales	14.1%	\$96,416	\$80,000	\$103,000
Legal Services	9.8%	\$131,816	\$88,400	\$199,830
Operations	6.8%	\$96,314	\$76,250	\$116,250
General Management	5.4%	\$87,909	\$83,000	\$90,500
Business Design	1.5%	\$90,000	\$85,000	\$95,000

"The Canadian health care system is a unique and complex environment, and the Rotman School clearly prepares its students to appreciate the regulatory and operational challenges involved in the project.

The thoughtful analysis and clear recommendations provided by our Rotman School intern set a framework for action that will inform our hospital's long-term care strategy over the coming years. I was particularly impressed with how an international student with impressive credentials in the engineering and mining industry could so quickly bring value to our organization."

Rob Crawford

Director of Strategy & Analytics
North York General Hospital

Full-Time MBA Class of 2022 Profile

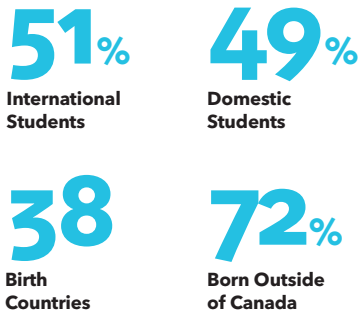
Class profile data is based on the incoming class of 2022 as of 2020



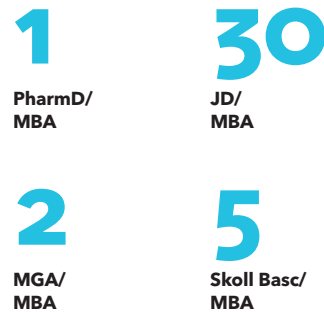
ACADEMICS



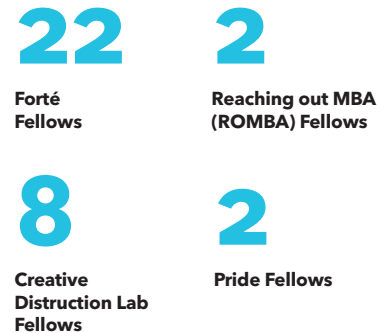
GLOBAL REACH



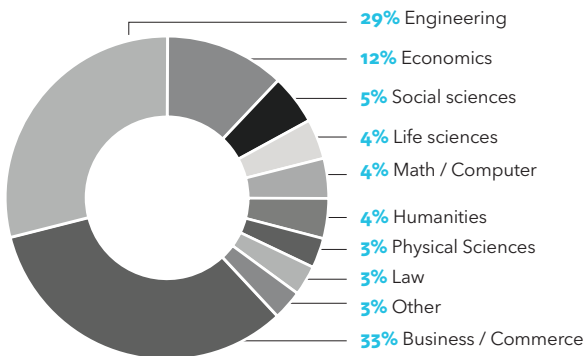
JOINT DEGREE



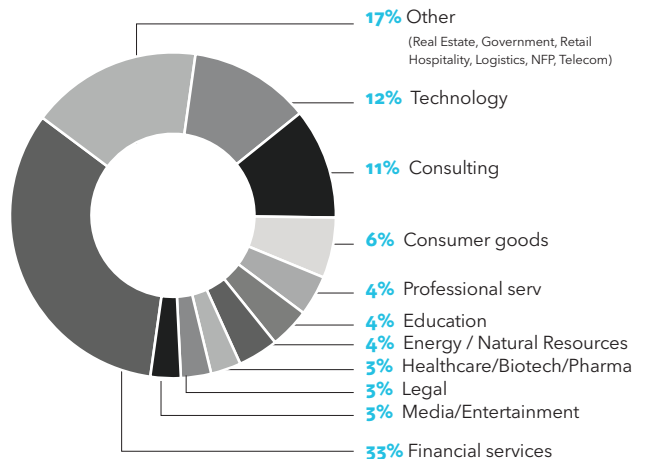
FELLOWS



ACADEMIC BACKGROUND



INDUSTRY BACKGROUND



Full-Time MBA Internships Class of 2022

Full-Time Internship Salaries (CAD)

Average Monthly Salary (inclusive of base, bonus, and other compensation)	\$5,754
Average Monthly Salary	\$5,500
Median Monthly Salary	\$4,863

Salary data based on 76% of employed students who reported salary information.

Full-Time MBA Internship Rates

97%

of Full-Time MBA students secured internships

"Rotman produces internship candidates who are well equipped for the workplace in a large economic hub city like Toronto. They are professional, technically sound and possess the right set of soft skills to succeed in the workplace. The Rotman Career Services office is great to deal with. They closely understand the employer needs and efficiently align with our hiring requirements. They respond with lightning speed and always have a solution."

Greg Coelho

Senior Advisor, Ministry of Economic Development, Job Creation and Trade Innovation Strategy and Programs Branch

FULL-TIME MBA INTERNSHIP SALARIES BY INDUSTRY (CAD)

Industry	% Employed	Average	Range 25th percentile	Range 75th percentile
Financial Services	42%	\$5,444	\$4,078	\$5,833
Consulting	13%	\$9,310	\$4,408	\$13,763
Healthcare	11%	\$3,539	\$3,025	\$4,025
CPG & Retail	6%	\$5,638	\$4,850	\$5,725
Government	6%	\$3,159	\$2,558	\$3,600
Technology	6%	\$5,845	\$4,635	\$7,000
Other	4%	\$4,669	\$3,469	\$4,908
Entrepreneurship	3%	\$4,163	\$3,880	\$4,725
Real Estate	3%	\$4,333	\$4,050	\$4,850
Energy & NR	2%	\$5,049	\$4,343	\$5,868
Non-Profit	2%	\$4,100	\$2,750	\$4,900

FULL-TIME MBA INTERNSHIP SALARIES BY FUNCTION

Function	% Employed	Average	Range 25th percentile	Range 75th percentile
Accounting/Finance	33%	\$5,528	\$4,069	\$5,959
Marketing/Sales	22%	\$4,706	\$3,539	\$5,185
Other	21%	\$4,810	\$3,075	\$5,560
Strategy	15%	\$8,041	\$4,250	\$12,750
General Management	5%	\$4,602	\$3,200	\$5,440
Business Design	2%	\$3,752	\$3,563	\$4,067
Operations	2%	\$5,569	\$3,900	\$6,795

% OF SCHOOL VS STUDENT FACILITATED INTERNSHIPS



"Our team at Avasta has grown through the exceptional talent that we have found as interns and full-time hires at Rotman. We have had success in the expertise and enthusiasm of our interns with our own organization's unique and proprietary alternative approach to traditional management consulting. The teaching staff at Rotman have cultivated in their students the forward-looking mindset required in today's business environment. We are proud to have welcomed four Rotman graduates as part of our permanent team in less than two years and are excited for our upcoming interns and future hires."

Edgar Baum
CEO & Founder, Avasta Inc.

"For many years now, Rotman has remained a supportive partner and a steadfast and reliable source of exceptional talent at Bain. Not only are Rotman students highly professional and prepared throughout their recruiting journey, but they are friendly, down-to-earth, and encompass a breadth of diverse skills and attributes that translate to phenomenal Bain consultants. We count ourselves lucky to have so many Rotman alumni at Bain, and each year, we look forward to partnering with Rotman and meeting the next amazing class."

Carly Hysenaj
Senior Specialist, Consultant Recruiting, Bain & Company



Industry Partnerships

For our corporate partners, our Industry Engagement team of seven are dedicated to help you meet your most pressing HR challenges, while developing a robust talent pipeline that will serve your needs in the future. We bring deep knowledge of key sectors and industries in Canada and internationally including:

- Canadian Banks
- Consulting
- Consumer Packaged Goods
- Credit Cards
- Global Energy, Oil & Gas and Mining
- Global Financial Services & FinTech
- Global Real Estate & Infrastructure
- Government
- Healthcare, Pharmaceutical and Life Sciences
- Media
- Not-for-Profit
- Payments
- Sports and Entertainment
- Startups
- Technology
- Transportation and Logistics

As we're constantly broadening our horizons as the career landscape evolves, we encourage you to reach out to us and discover how the Rotman School at the University of Toronto, with its top-tier reputation and location close to the city's business core, is ideally positioned to provide you with the talent you need to drive your organization forward.

"My transition from the education and non-profit world to my current role as a strategy consultant was made possible by the holistic approach to career development offered by the Rotman School. The contributions of the dedicated professors, peers and friends, the accomplished and helpful career centre staff, and the supportive alumni community, whose members are always available to share their perspectives and facilitate the right conversations all defined my journey. With their support, I was able to not only land an amazing new position, but transform my professional identity, making an impact at work and in the broader community."

Hillel Bierbrier (MBA '18)
Senior Associate, Strategy& (Part of the PwC Network)

#		
5&Vine		
A		
Abbott	Bloom Burton Securities Inc.	Cineplex Entertainment LP
Abbott Medical Canada	Bloom Venture Partners	Circe Bioscience
Able Innovations Inc.	Bloomberg LP	Cisco
Accenture Inc. (Canada)	BlueRock Logistics - Canada	Citi (Canada)
Access to Success	BMO	Citi Bank
Achievers	BNP Paribas	Citi Global Markets - Asia Pacific
Actis Private Equity	Bombardier	Citrine Informatics
Ada	Bond Brand Loyalty	Clairvest Group Inc.
Adaptovate	Boston Consulting Group (Canada)	Clariti
Adidas Group	Boyden	Clarity
ADP	Brainmaven	Clearco
AECOM	Brendan Wood International	Cleveland Clinic Canada
AGF Investments	Bridgeable	Clk2Pay
Agnostiq	BridgeME	Clio
Akzent Group	British Columbia Investment Management Corporation (BCI)	CMLS Financial Ltd.
Algonquin Power & Utilities Corp.	Brompton Funds Limited	CN Rail
Alio	Brookfield Asset Management	Coactuate
AlixPartners, LLP	Brookfield Properties	Coinsquare Capital Markets
Alpha Square Group	BuildOps	Colgate-Palmolive Asia Pacific Limited
Alphavima Technologies	Burgundy Asset Management Ltd.	ComplianceQuest Inc.
Alteris Consulting	Business Design Initiative	Constellation Software
Altis Labs	BuyProperly: Online marketplace for fractional real estate property investments	Convergence
Altree Developments	Bytedance	Cosmos Sports & Entertainment
Amazon		Cota
AMD	C	crawfordconnect
Anheuser-Busch InBev	C.D. Howe Institute	Crawley MacKewn Brush LLP
Apex Mobile Media	Caddy	CreateTO
Apotex	Calligo	Creative Destruction Lab
Appficiency	Cambridge Memorial Hospital (CMH)	Credicorp
Apple	Campbell Company of Canada	Credit Suisse
Aritzia	Canaccord Genuity Corp.	Crestpoint Real Estate Investments Ltd-Part of CC&L Financial Group
Arterra Wines Canada	Canada Goose	Cubert
Ascend	Canada Goose Arctic Program	Cutfield Freeman & Co Ltd.
Ascend Analytics	Canada Infrastructure Bank (CIB)	Cyclica Inc.
AstraZeneca International	Canada Life	D
AT&T	Canada Mortgage and Housing Corporation (CMHC)	D2L
Atrium Mortgage Investment Corporation-	Canada Pension Plan Investment Board (CPPIB)	Daggerwing Group
Canadian Mortgage Capital Corporation	Canada Post	Danaher Corporation
Autodesk	Canada's National Observer	Dashlane
Avanade	Canadian Tire Corporation Ltd.	Dassault Systemes
Avasta Incorporated	CanDeal Markets	Datanaya
Avro Life Science	CanFirst Capital Management	Datto
B	Canso Investment Counsel Ltd.	Davies Ward Phillips & Vineberg LLP
Bain & Company (Canada)	Canvass AI	DBRS Limited - Canada
Bank of America	Capital Developments	DBRS Morningstar
Bank of Canada	Capital Methods	Debut Group
Bank of Montreal Financial Group	Capital One (Canada)	Deliverr
BARCLAYS	Cardata	Deloitte (Canada)
Bay Mills Investment Group and The Bay Mills Diversity Fund	Care & Family Health	Desjardins Capital Markets
Bayer Inc.	CARE Canada	Desjardins General Insurance Group
BDO Canada LLP	Carlsberg Canada	Desjardins Securities Inc. (Part Of Desjardins Group Of Companies)
Bell	CBRE	DiDi
BenchSci	CBRE Global Workplace Solutions (GWS)	DIDI Global
Best Buy Canada	CBRE Investment Management	DOM Sports and Games
BetterUp	CDSPI	DoorDash
BetterVet	Celestica	Drone Delivery Canada
BetterVU	Central 1	E
Betterware	Centre for Commercialization of Regenerative Medicine (CCRM)	eBay
Bionic Power Inc.	CentreCourt Developments Inc.	ecobee
BioSteel - Sports Drink and Sports Nutrition Company	Ceridian	Economical Insurance
Birch Hill Equity Partners Management Inc.	CGI Inc	Edelman
BitMEX	Chewy	Edenshaw Developments Limited
Black Boys Code	Chrysalix Venture Capital	Eight Capital
BlackBerry	Church & Dwight Co., Inc.	eLeapPower
Blair Franklin Capital Partners	CIBC	Electric Avenue
Blake, Cassels & Graydon	CIBC Simplii Financial	Electronic Arts
	Cidel Asset Management Inc.	Eli Lilly
	Cigna	Eli Lilly Asia, Inc.
		EllisDon Corporation

Emma - The Sleep Company
 Environmental Defense Fund
 Ernst & Young
 eSight Eyewear
 Evenset Inc.
 Everest Group
 Export Development Canada (EDC)
 Express Scripts Canada
 Extencicare
 ExxonMobil

F

F. Hoffmann-La Roche
 Facet Skincare
 Fasken
 FAX Capital Corp. (FAX)
 FendX Technologies Inc.
 Fidelity Investments Canada ULC
 Fiera Capital Corporation
 Fiix Software
 FIS Global
 Fitch Ratings
 Flipp
 Foodiepages
 Forthlane Partners
 Four Seasons Hotels and Resorts (Canada)
 Framework Venture Partners
 Freed Developments
 Freely Parking
 Freshii
 FullG Capital
 FundThrough Inc.
 Fusion Analytics
 FutureSight Ventures

G

GALE Partners LP
 Gartner
 Gatik
 GE Healthcare
 Gemic
 General Mills Canada Corporation
 George Brown College
 Georgian
 Geotab
 Gilead Sciences Canada Inc.
 Glen Dimplex Americas
 Global Alpha Capital (Connor, Clark & Lunn Financial Group)
 Global Cargo Systems
 Global Performance Improvements Inc.
 Global Risk Institute in Financial Services (GRI)
 Global Skills Hub
 Google
 Government of Canada
 Grace Hill
 Gradient Robotics
 Grasshopper Solar
 Graywood
 GreenSky Capital, Inc.
 Greybrook Realty Partners Inc.
 Guardian Capital Group Limited
 GWN Holdings Ltd.

H

Halmyre
 Hatch Consulting
 Health Hub Solutions
 Healthcare Excellence Canada
 HealthHub
 HelloFresh
 HelloFresh Canada

Henkel Canada Corporation
 Hewlett-Packard Enterprises
 Hines
 HLS Therapeutics Inc
 Hockeystick.co Inc.
 Home and Community Care Support Services Central
 Home Depot (Canada)
 HomeEquity Bank
 Homestars
 HOOPP | Healthcare of Ontario Pension Plan
 Hootsuite
 Horizon
 Horizon Robotics
 HP Inc.
 HSBC
 Huatai Securities Co. Ltd
 Hudson's Bay Company
 Humi
 Hyundai Canada

I

IBM
 ICF
 ICON TALENT PARTNERS & THE CVCA-BIPOC-Private Equity and Venture Capital
 IMCO-Investment Management Corporation of Ontario
 Impact Consulting Group
 Imperial Oil (Canada)
 Imperial Tobacco Canada
 In Nova Consulting Inc.
 Indie Travel
 Information Venture Partners
 Infrastructure Ontario
 Ingram Micro
 Innomar Strategies Inc.
 Instacart
 Institute for Advancements in Mental Health
 Intact Financial Corporation
 integrate.ai
 Intentional Capital
 Interac
 International Finance Corporation (IFC)
 Intuit Inc.
 Intuitive AI
 Invesco Indexing, LLC
 Ipsen
 IQVIA

J

J17 Capital
 Jeffries
 JLL
 Johnson & Johnson Family of Companies (Canada)
 Joyride
 JP Morgan Chase
 JTE Claims Consultants LTD.

K

Kaizco
 Kearney (Canada)
 Keller Williams Legacies Realty, Brokerage-AVENUE REALTY INC. TEAM
 Kensington Health
 KeyData Associates Inc.
 KeyOps
 Kinaxis
 Kinnd
 Klick Health
 Konrad Group
 Koru

KPMG

L

Labatt Breweries - Anheuser-Busch InBev
 Laurentian Bank Financial Group
 Ledcor Group
 Letko, Brosseau & Associates Inc.
 Level
 LEVEL5 Strategy Group
 Levelwear
 Levitt-Safety
 Liberty Power
 LinkedIn
 Linwood Custom Homes
 Lionsgate Entertainment
 Live Nation Entertainment
 LlamaZOO Interactive Inc.
 Loblaw Companies Ltd.
 Loopio
 L'Oréal
 LoyaltyOne Inc.
 LUCID
 Lynk Global

M

Mackenzie Investments
 Made of Millions
 Magna International
 Manulife Financial
 Maple
 Maple Leaf Foods Inc.
 Marcatus QED
 MaRS Discovery District
 Masco Canada Ltd
 Massive Insights
 MasterCard
 Mattamy Homes
 Mavennet
 Mawer Investment Management Ltd.
 Mayo Clinic
 McCain Foods Limited
 McCarthy School Uniforms Inc.
 McDonald's Restaurants of Canada
 McKesson Canada
 McKinsey & Company (Canada)
 Medcan Clinic
 Medical Esthetics School of Quebec/École Esthétique Médicale du Québec - Cours & Formation
 Mercado Libre
 Meridian Credit Union Ltd.
 Meridian Global Inc.
 Meta
 Metro Supply Chain Group
 Metrolinx
 Michael Garron Hospital
 Microsoft
 Mindray North America
 MiningFeeds.com
 Ministry of Children, Community and Social Services
 Ministry of Health and Long-Term Care
 Misfits Global
 Mitsio Motu
 MKTG Sports & Entertainment
 MLSE (Maple Leaf Sports & Entertainment)
 Moderna Canada
 Molson Coors Canada
 Moneris
 Morgan Stanley
 Morrison Financial Services Limited
 MUFG Bank Canada-Mitsubishi UFG
 Munich Re Canada

Munvo
Myplanet

N

National Bank Financial Inc. (NBF)
National Research Council Canada
Natural Resources Canada
Nestlé China Ltd.
New Power Labs (NPL)-Backed By Marigold
Capital
Nexans North America
NeXus Consulting Group
Ninepoint Partners LP
Normative
North York General Hospital
Northleaf Capital Partners
Nous Group
Novacap
Novo Nordisk
Novocol Pharma
NOVOCOL PHARMA
Nylas

O

O3 Mining
ODAIA Intelligence
Office of the Superintendent of Financial
Institutions (OSFI)
Ogilvy Health
Oikocredit Canada
Oliver Wyman
Olli Brands Inc
OMERS
OMERS-OXFORD DEVELOPMENTS
Omlove
Omni Super App
Ontario Bioscience Innovation Organization
(OBIO)
Ontario Court of Appeal
Ontario Government
Ontario Health
Ontario Lottery and Gaming Corporation
Ontario MD
Ontario Ministry of Economic Development,
Job Creation and Trade
Ontario Ministry of the Attorney General
Ontario Power Generation Inc. (OPG)
Ontario Public Service (Treasury Board
Secretariat)
Ontario Securities Commission (OSC)
Ontario Teachers' Pension Plan (OTPP)
Onyx Initiative
OP Trust
OpenText
Oppo Mobile Telecommunications Corp.,
Ltd
OPTIMUS SBR
Oracle
Organigram Inc.
Origin Merchant Partners
Orrick, Herrington & Sutcliffe LLP
Osler, Hoskin & Harcourt LLP
Outlier Ventures
OverActive Media Group
Oxford Properties Group

P

PagerDuty
Panasonic
Paradigm Capital Inc.
Path
PatrnerOne
Paul Hastings LLP

Paul Weiss
PayBright
Payments Canada
Penfield.AI
Peoples Trust, Part of Peoples Group
PepsiCo APAC
PepsiCo Canada
Percy Ellis
Peytec Inc.
PhenoTips
Picton Mahoney Asset Management
PIMCO-Pacific Investment Management
Company LLC
Pinterest
Pixel Dreams
PK
PK Global
Platform Group
PointClickCare
Poppy
Portag3 Ventures
Portland Holdings
Powerex
Prescient Private Fund Management
PricewaterhouseCoopers LLP (Canada)
Pricing Solutions
Procter & Gamble
Prodigy Ventures Inc.
Promise Robotics
Prosper Canada
PSP Investments-Public Sector Pension
Investment Board
PureFacts Financial Solutions
Purpose Financial
PwC

Q

Q4 Inc.
Qianjin Network Information Technology
(Shanghai) Co., Ltd.
QuadReal Property Group
Questrade
Quinn & Partners Inc.

R

Rally Assets
Raymond James Ltd.
RB Canada
RBC
Reach Platform
Real Food for Real Kids
Realstar Management
Recipe Unlimited Corporation
Reddit Inc.
Reed Group
Regen Capital
Relay Ventures
RENEW LLC
RentMoola
Republic Developments Inc.
Restaurant Brands International
Revenue Management Labs
Rhenti
Rhenus Logistics Canada
Richter Real Estate Advisory
Right to Play International
Riskfuel
Rogers
Rosedale International Education
Ruh

S

Saint Elizabeth Healthcare

SalesChoice
Salesforce
Sanofi Pasteur
SAP
SAP Pioneer
Sapling Financial Consultants
Sarana Asset Management
SAS
Satov Consultants
Savormetrics
SBQuantum
Scotiabank
ScottMadden, Inc.
SE HealthCare
SeamlessMD
Setter Capital Inc.
Shanghai Disney Resort
Shanghai Pharmaceuticals Holding Co., Ltd.
Sharp Electronics of Canada Ltd.
Shaw Communications
Shawcor Ltd
Shelborne Capital
Shift Health
Shinhan Bank Canada
Shiphrah Biomedical Inc.
Shopify
SickKids Foundation
Sienna Senior Living
Signal Hill Equity Partners
Sinai Health System
Siskinds LLP
SLC Management
Smile CDR Inc.
Snap Inc.
Sobeys Inc
Social Capital Partners
Sofina Foods Inc.
Softchoice
Sourced Group
South End Partners
Southlake Regional Health Centre
SpaceRyde
Spin Master
SPINVFX
Spotify
Springboard Clinic
Sprott
Square
Stablecorp Inc.
Staples
Staples Canada
Starlight Investments
StepStone Group
Stifel Canada
Stikeman Elliott LLP
Storybolt
Strategic Policy Economics
Stratum AI
STS Capital Partners
Sullivan & Cromwell LLP
Sumitomo Corporation Equity Asia
Sun Life Financial Inc.
Survey Monkey
Sustainalytics
Symbolicware
Synergis Capital

T

Tableau
Tala
Talencity
Tangerine
Taptap Send

TAS Design Build
 TD Bank
 TEALEAVES
 TELUS
 Ten Spot
 Ten Thousand Coffees
 Tenstorrent
 Teranet Inc.
 Tesla
 The Bird&Be Co.
 The Boiler Inspection and Insurance
 Company of Canada
 The Cadillac Fairview Corporation Limited
 The Clorox Company
 The Daniels Corporation
 The Decision Lab
 The Entrepreneurship Hatchery
 The Fertility Partners
 The Hershey Company
 The Hospital for Sick Children
 The Jean Tweed Centre
 The Kirchner Impact Foundation
 The Kraft Heinz Company
 The Marquee Group
 The North West Company LP
 The SIX Properties-Residential Real Estate
 Asset Manager
 The Walt Disney Company
 Think Research
 Third Eye Capital
 Thomson Reuters
 Thornburg Investment Management
 Thrive Health
 TickTrade
 TikTok
 TMX Group
 Too Good to Go
 Top Hat
 Toronto Finance International
 Toronto Police Service (TPS)
 Toronto Transit Commission
 Tory's LLP
 Trexo Robotics
 Trichome JWC Acquisition Corp.
 Trillium Health Partners
 TTG Canada
 Tucows
 Twitter

U

Uber
 Ubiquity Solar Inc.
 Ubisoft
 UBS Wealth Management Canada
 Uken Games
 Unable to disclose yet
 Unilever PLC
 United Nations Capital Development Fund
 Unity Health
 University Health Network
 University of Toronto
 University of Toronto Asset Management
 Corporation-UTAM
 UPP-University Pension Plan Ontario

V

Vaco
 Valeyo
 Validus Risk Management
 Vector Medical Corporation
 Veeva Systems
 Vena Solutions
 Venture for Africa

Verstra Ventures
 VerticalScope Inc
 Vincilabs
 VISA Canada
 Vision Capital Corporation
 Vital Bio Inc.
 Volaris Group
 Volta Circle
 Voyager Products

W

Walmart Canada Corp.
 Wasserman Media Group
 Wattpad
 Wave HQ
 Weil, Gotshal & Manges LLP
 WELL Health Technologies
 Wells Fargo Canada
 Wells Fargo Securities (New York)
 Weston Foods
 Whirlpool Corporation
 Willis Towers Watson
 Winnermax Capital Inc.
 Wipro
 Wish
 Workday
 World Bank Group
 Wyse Meter Solutions

X

XOKind

Y

York Region District School Board
 YouCount

Z

Zafin
 Zhongshan Securities Co
 Zola.com
 ZS Associates (Canada)

Connect with Rotman Career Services



At Rotman Career Services, our team of over 25 industry advisors and career coaches are united by the goal to both support our graduates in their search for a fulfilling career - and to provide our partners with the talent they need to meet the challenges of a fast-moving economy.

For our corporate partners, our team of seven industry advisors are dedicated to help you meet your most pressing HR challenges, while developing a robust talent pipeline that will serve your needs in the future.

As we're constantly broadening our horizons as the career landscape evolves, we encourage you to reach out to us and discover how the Rotman School at the University of Toronto, with its top-tier reputation and location close to the city's business core, is ideally positioned to provide you with the talent you need to drive your organization forward.

For more information on our employer engagement opportunities, please contact Career Services.

Rotman Career Services

career.services@rotman.utoronto.ca

416.946.7953

www.rotman.utoronto.ca/Connect/HireRotmanTalent

Career Services Team

Alongside our Industry Engagement team who are here to facilitate the process of finding you the best talent for your recruitment needs, our 12 dedicated Career Consultants work closely with our students to ensure they have all the necessary skills and assets to begin adding value to organizations from day one.



Lyla Korhani
Director



Sheila Schaffzin
Associate Director,
Industry Engagement

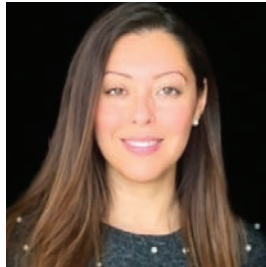


Alisha Rajani
Associate Director, Career
Curriculum and Consulting



James Kisyk
Industry Advisor

- CPG
- Retail
- Transportation and Logistics
- Healthcare, Pharmaceutical and Life Sciences



Elly Bertram
Industry Advisor

- Technology
- Startups
- Media
- Sports and Entertainment



Gil Panuncialman
Industry Advisor

- Government
- Consulting
- Not-for-Profit



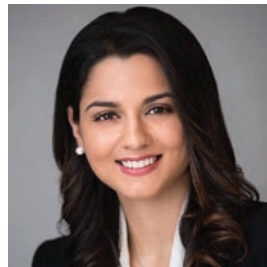
Ryan McKee
Industry Advisor

- Global Financial Services & FinTech
- Global Real Estate & Infrastructure
- Global Energy, Oil & Gas and Mining



Vrinda Mehta
Industry Advisor

- Canadian Banks
- Credit Cards
- Payments



Hana Dhanji
Global Business Development
Manager (New York)

Rotman

Here's where it changes.

How to Interpret Our Statistics

Reporting Standards

Rotman Career Services is a member of the MBA Career Services and Employer Alliance (MBA CSEA). The MBA CSEA together with GMAC, the organization that administers the GMAT test among other programs, set out guidelines for reporting employment, salary, and other related statistics. These guidelines establish the standards for reporting statistics to rankings as well as the MBA CSEA itself.

Salary Statistics

In addition to looking at the average for salary compensation, it is important to note the median (midpoint) and range since these data points provide a broader view to how the salaries are distributed for the class. A small number of students receiving high salary offers can skew the average up while some that receive lower salary offers can skew the average down. We report in local dollars and foreign salaries are converted at the going exchange rate. Please note that exchange rate conversions are not reflective of the cost of living and wage profiles where the students are employed.

Employment Rate

The employment rate is the percentage of students with accepted offers of employment, based on the number of students reporting back and actively looking for work.